

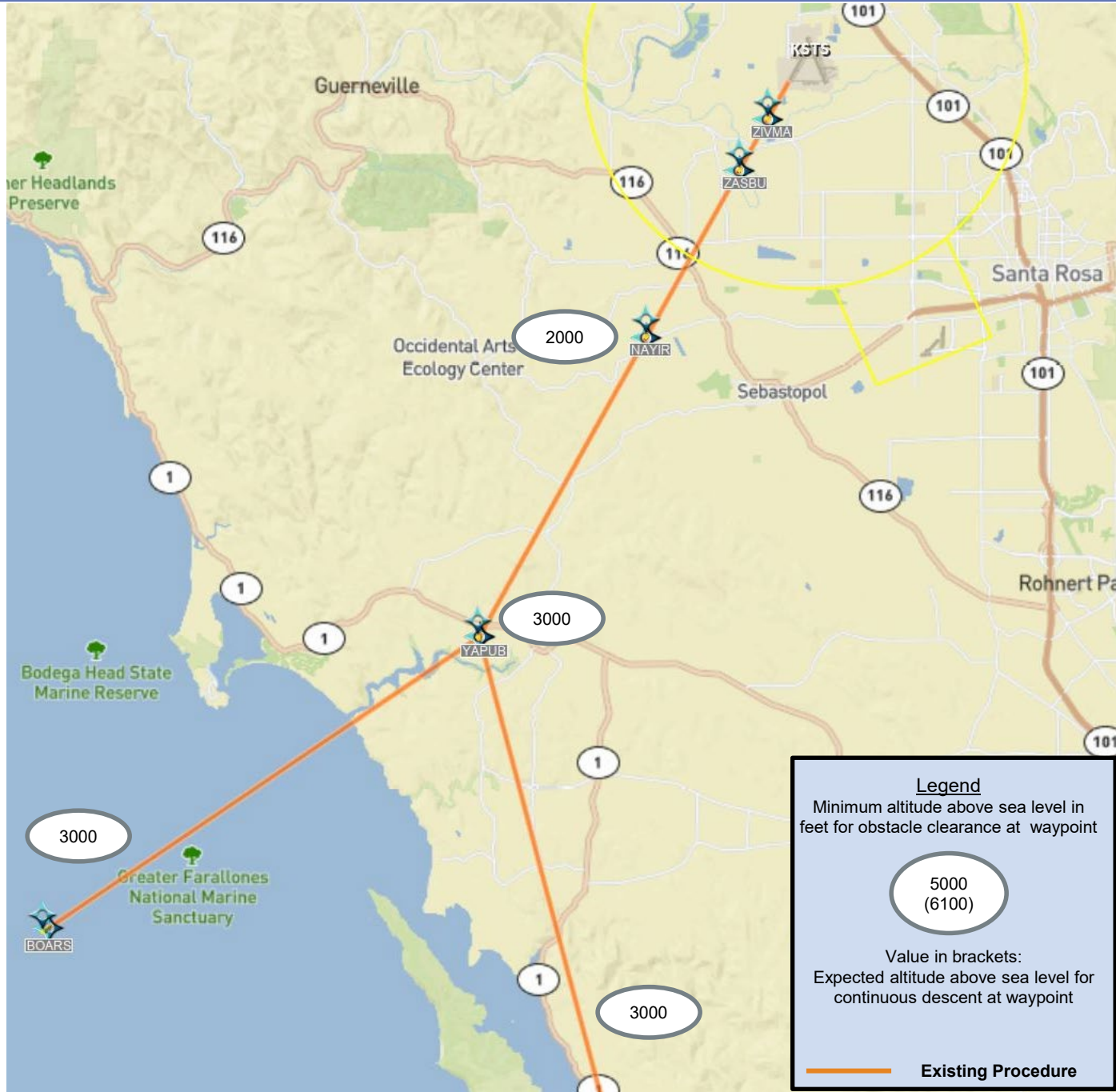
APPROACH DEVELOPMENT FEASIBILITY STUDY

Display Boards

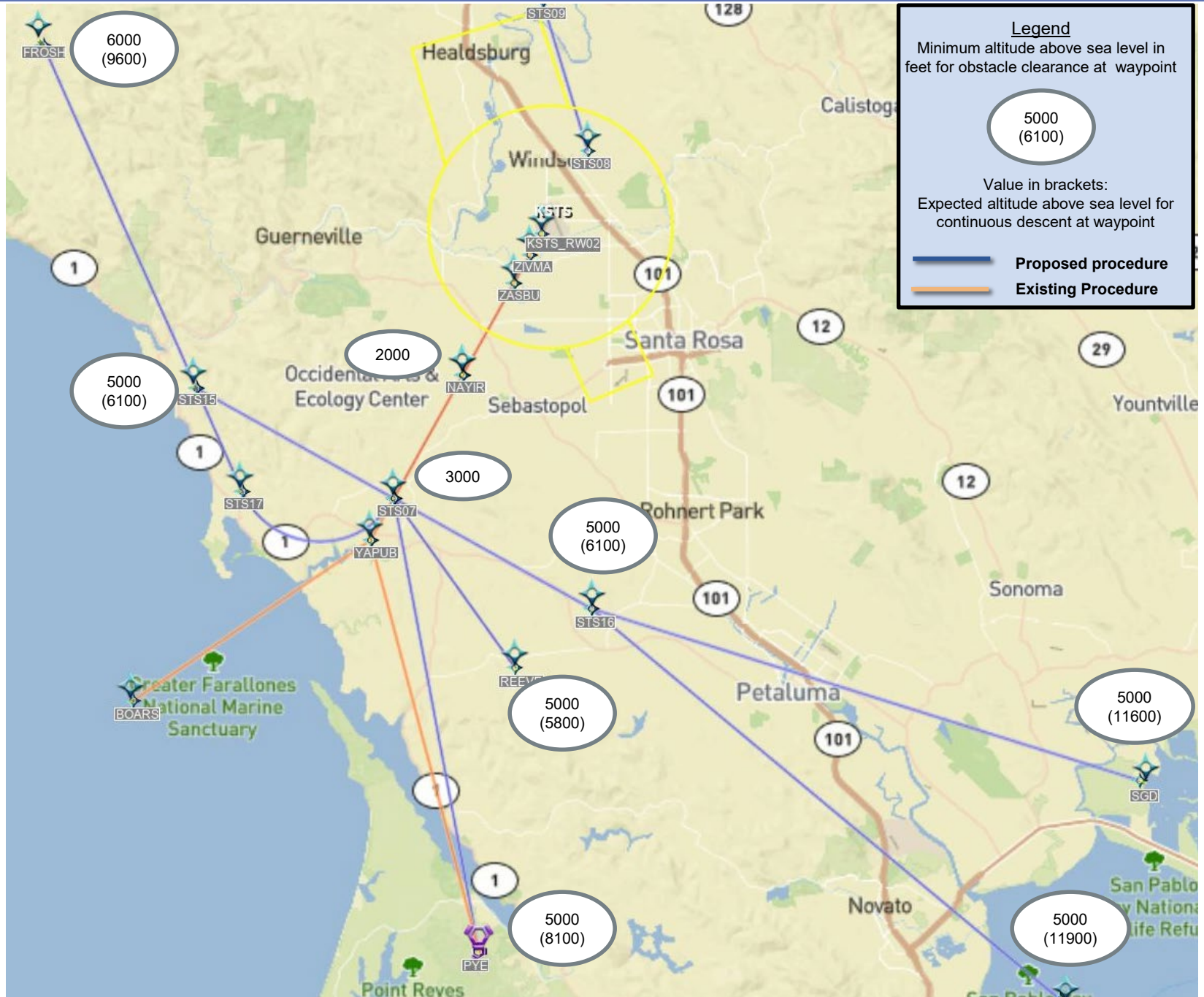
October 2024

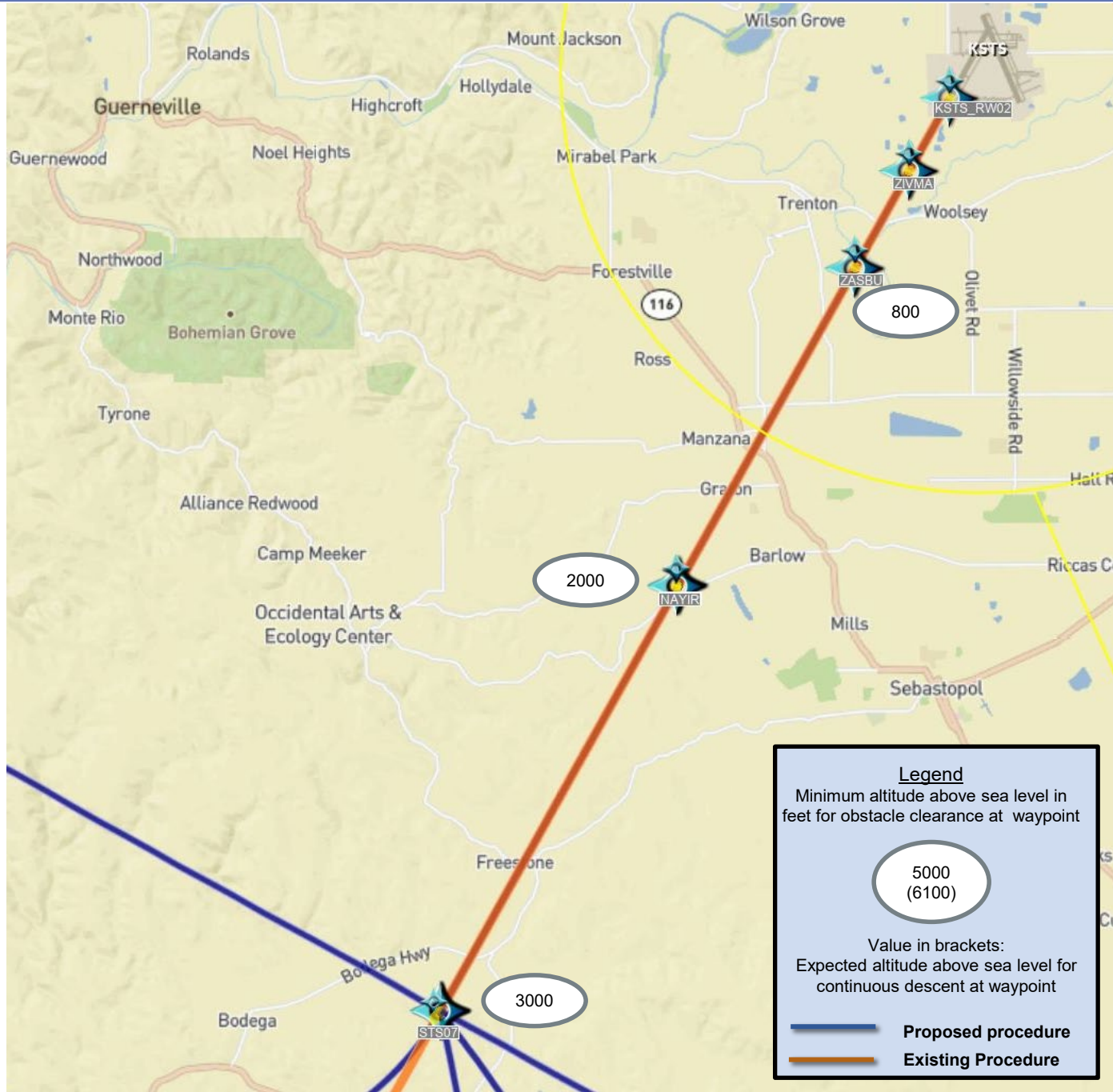
Charles M. Schulz – Sonoma County Airport





RWY 2 – Proposed procedure overlaid on current 3





Legend

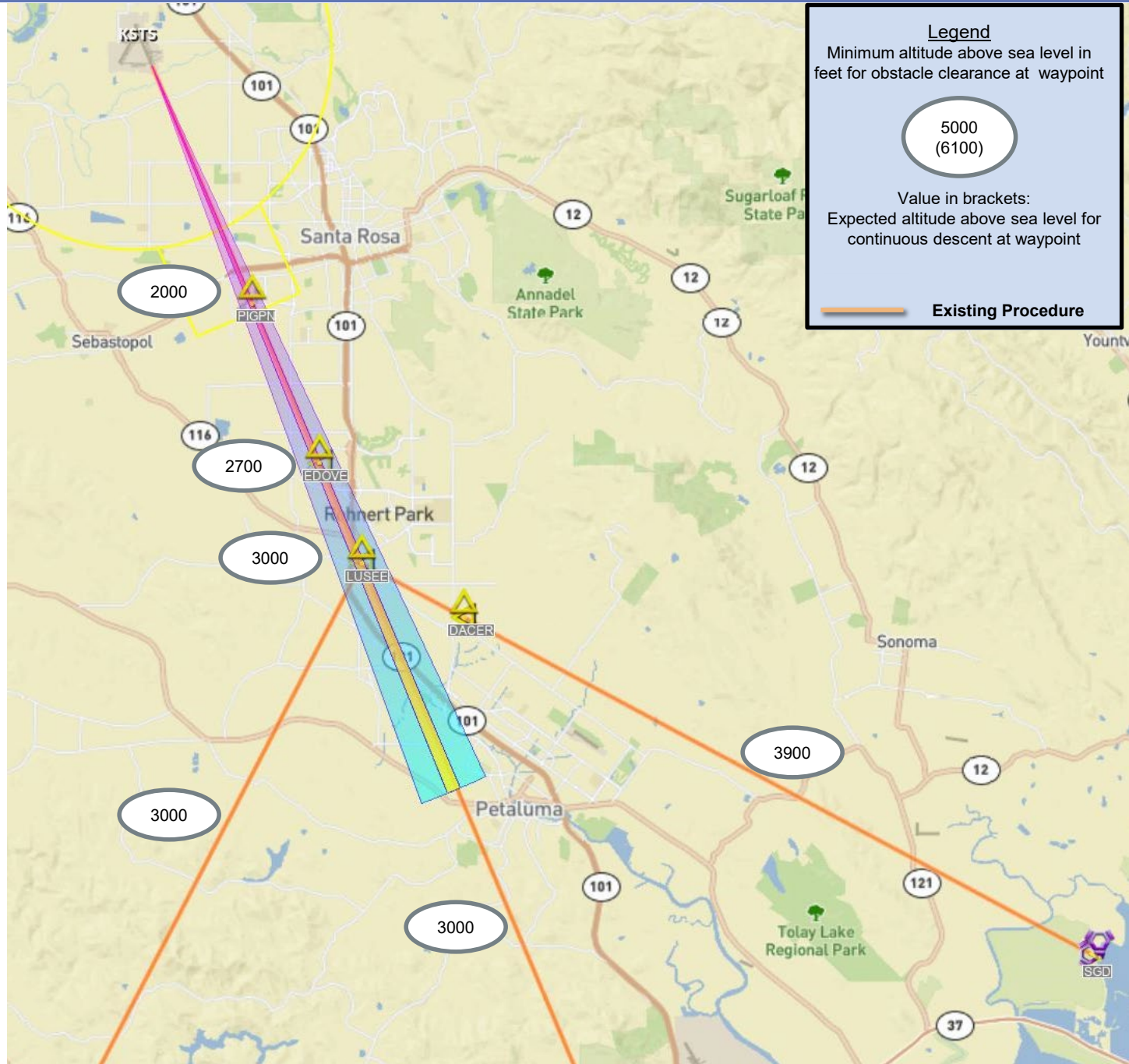
Minimum altitude above sea level in feet for obstacle clearance at waypoint

5000
(6100)

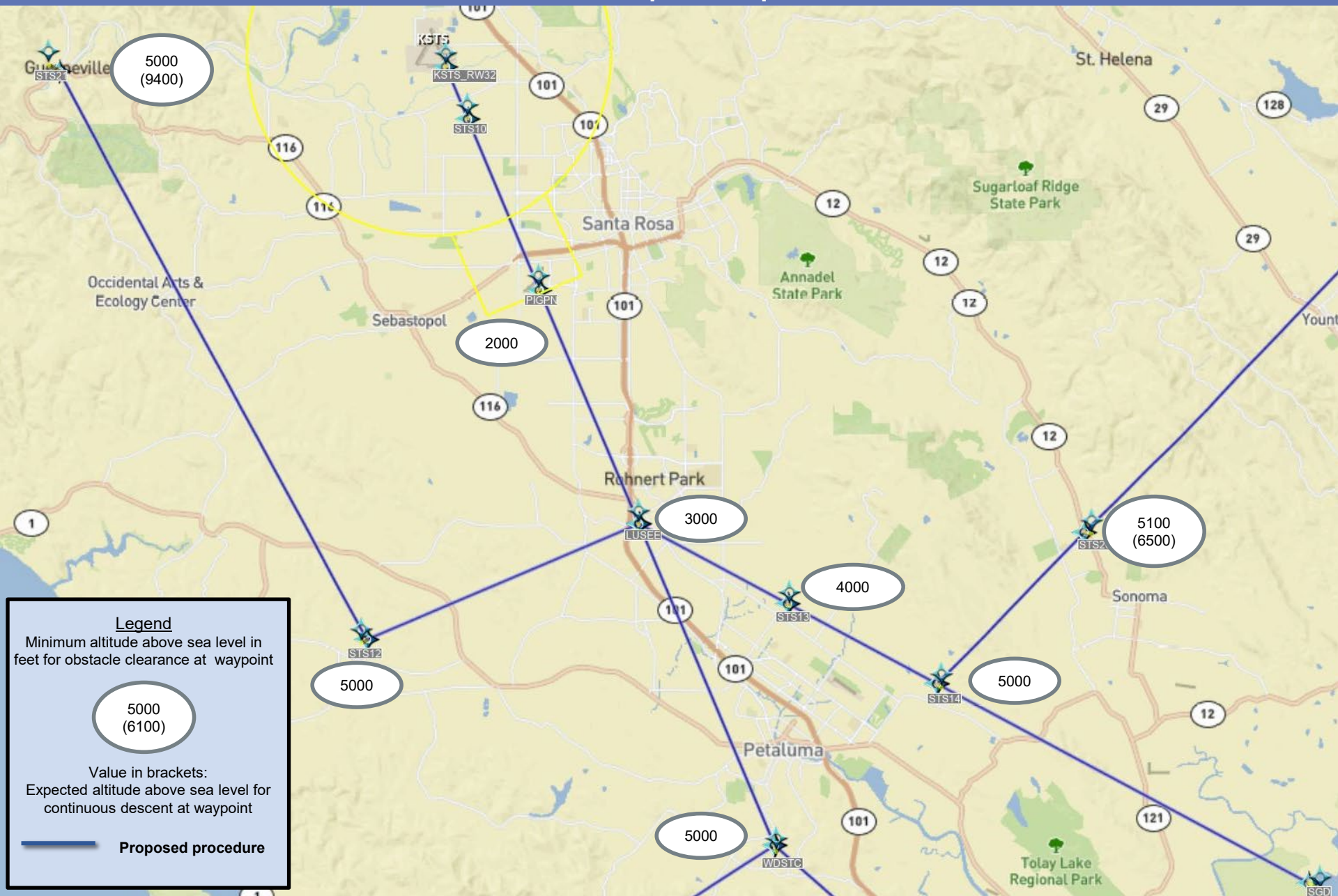
Value in brackets:
Expected altitude above sea level for continuous descent at waypoint

Proposed procedure

Existing Procedure



RWY 32 – Proposed procedure



Legend

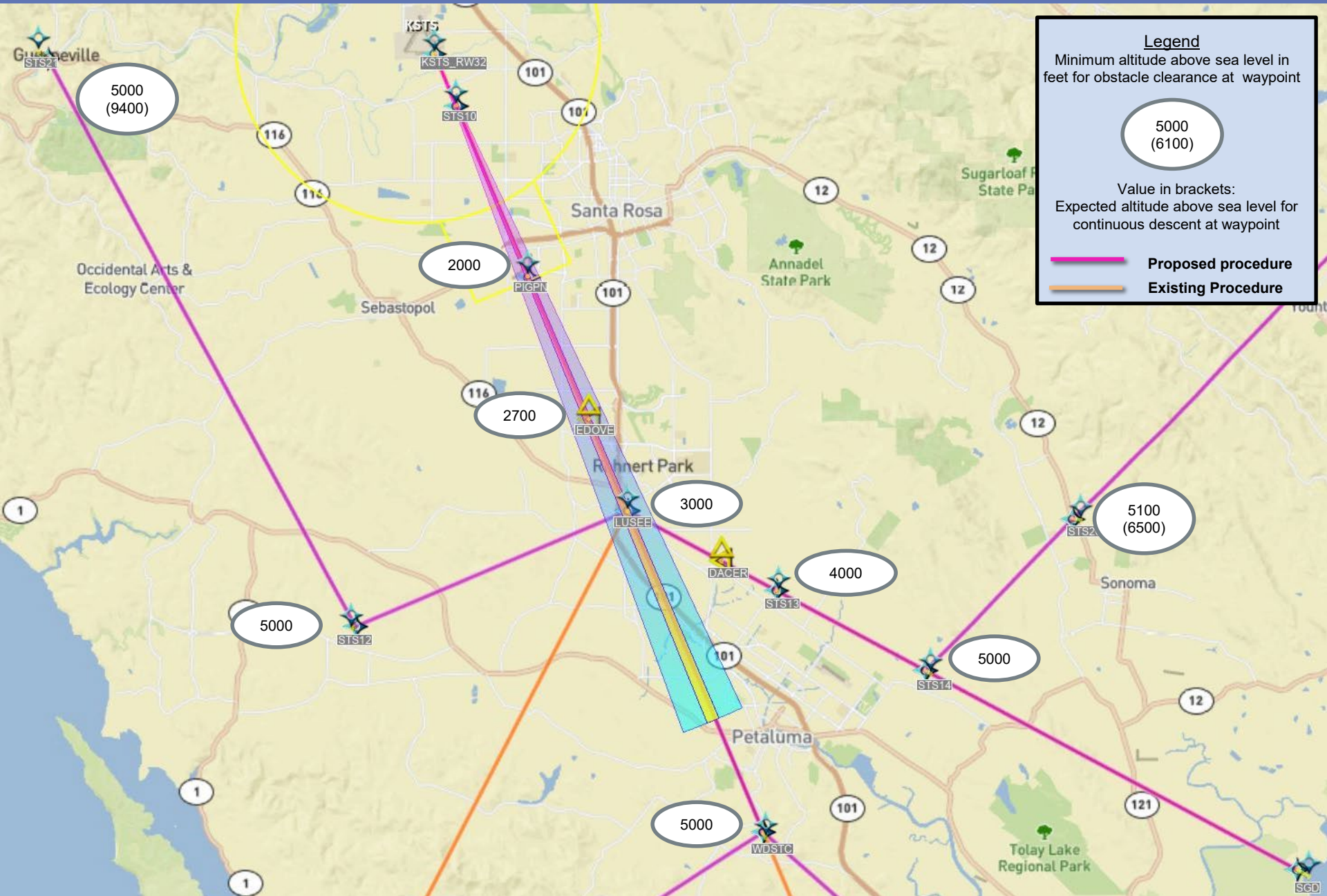
Minimum altitude above sea level in feet for obstacle clearance at waypoint

5000
(6100)

Value in brackets:
Expected altitude above sea level for continuous descent at waypoint

 Proposed procedure

RWY 32 – Proposed procedure overlaid on current 7



Legend

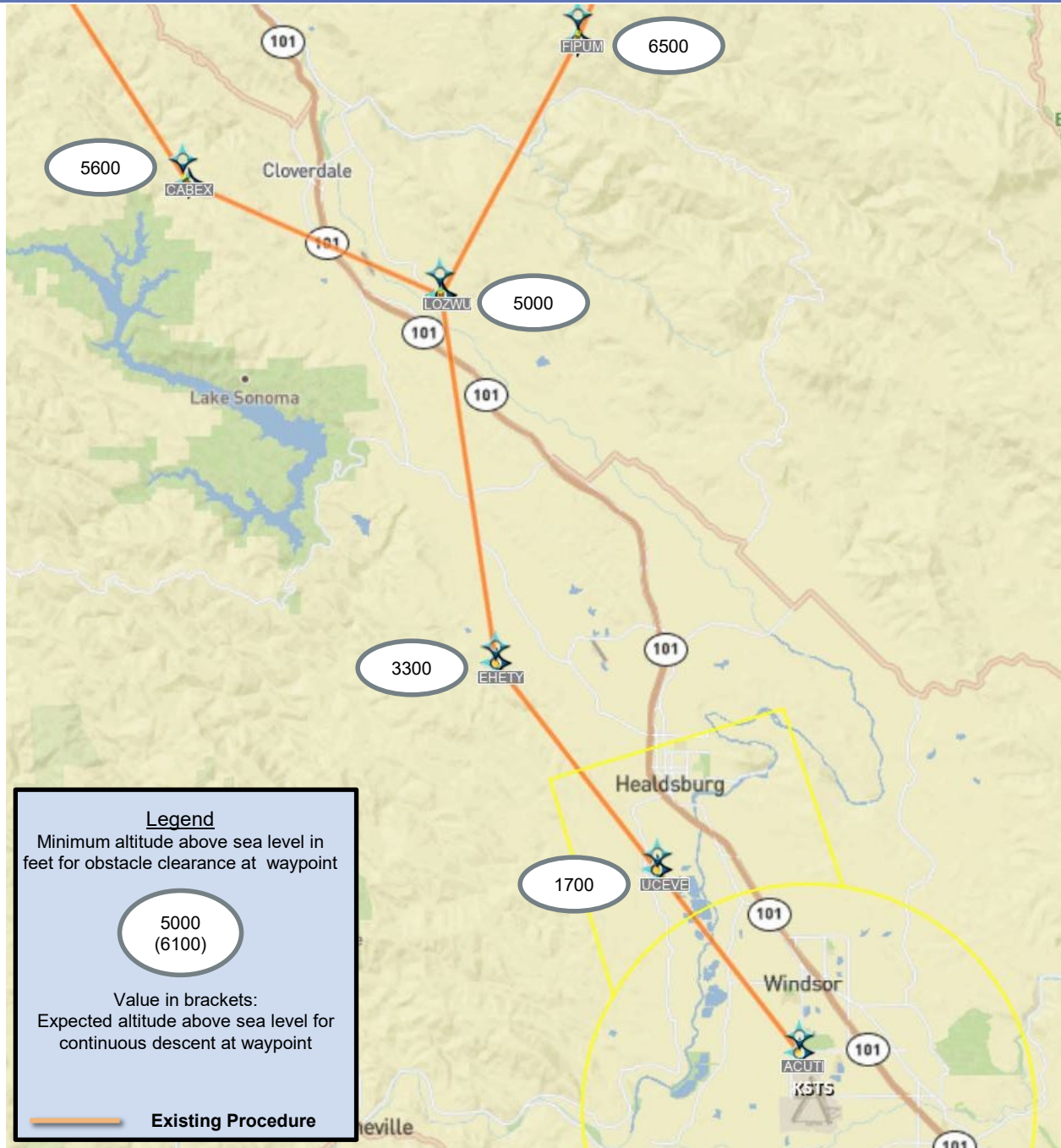
Minimum altitude above sea level in feet for obstacle clearance at waypoint

5000 (6100)

Value in brackets:
Expected altitude above sea level for continuous descent at waypoint

Proposed procedure

Existing Procedure



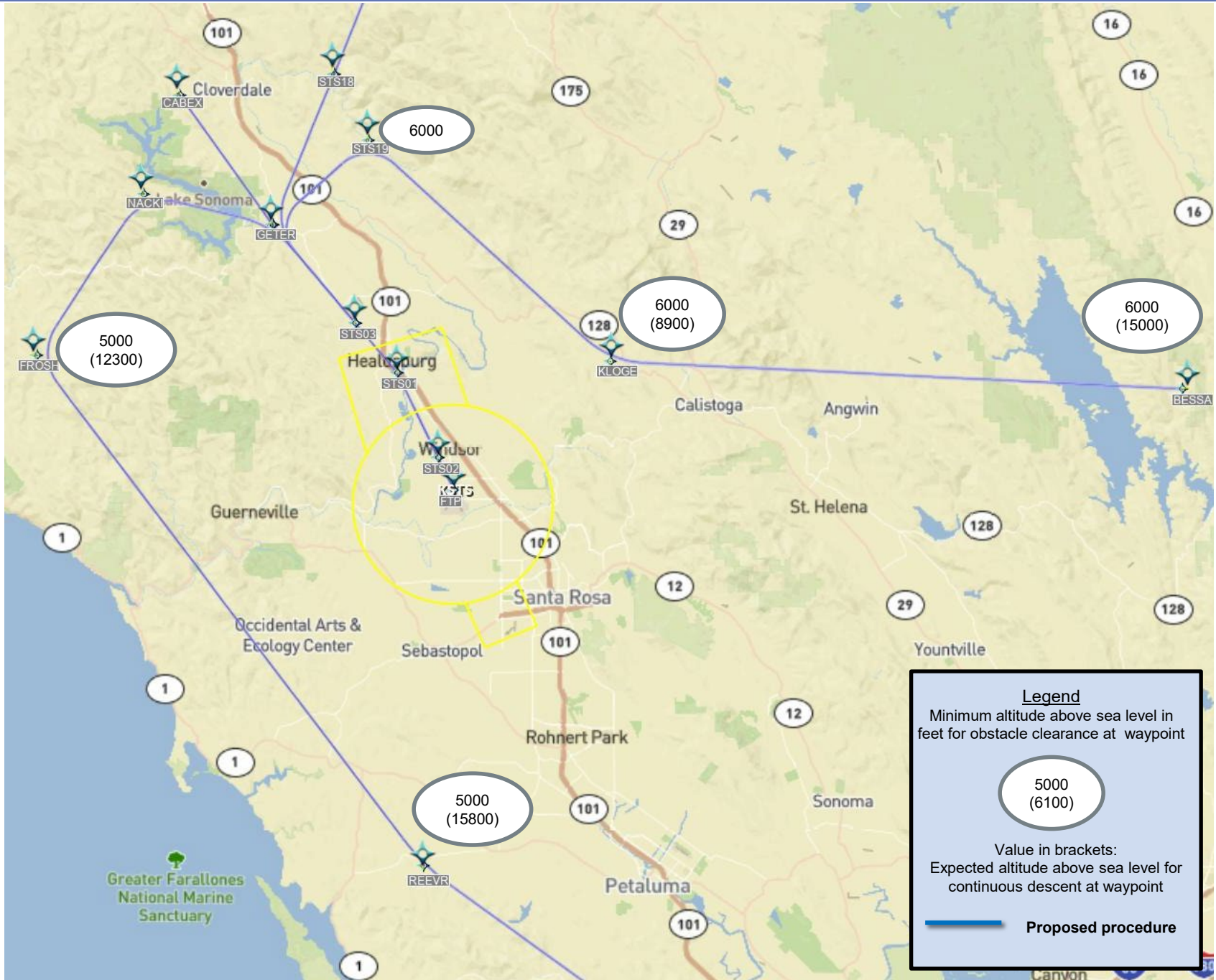
Legend
Minimum altitude above sea level in feet for obstacle clearance at waypoint

5000
(6100)

Value in brackets:
Expected altitude above sea level for continuous descent at waypoint

Existing Procedure

RWY 14 – Proposed procedure



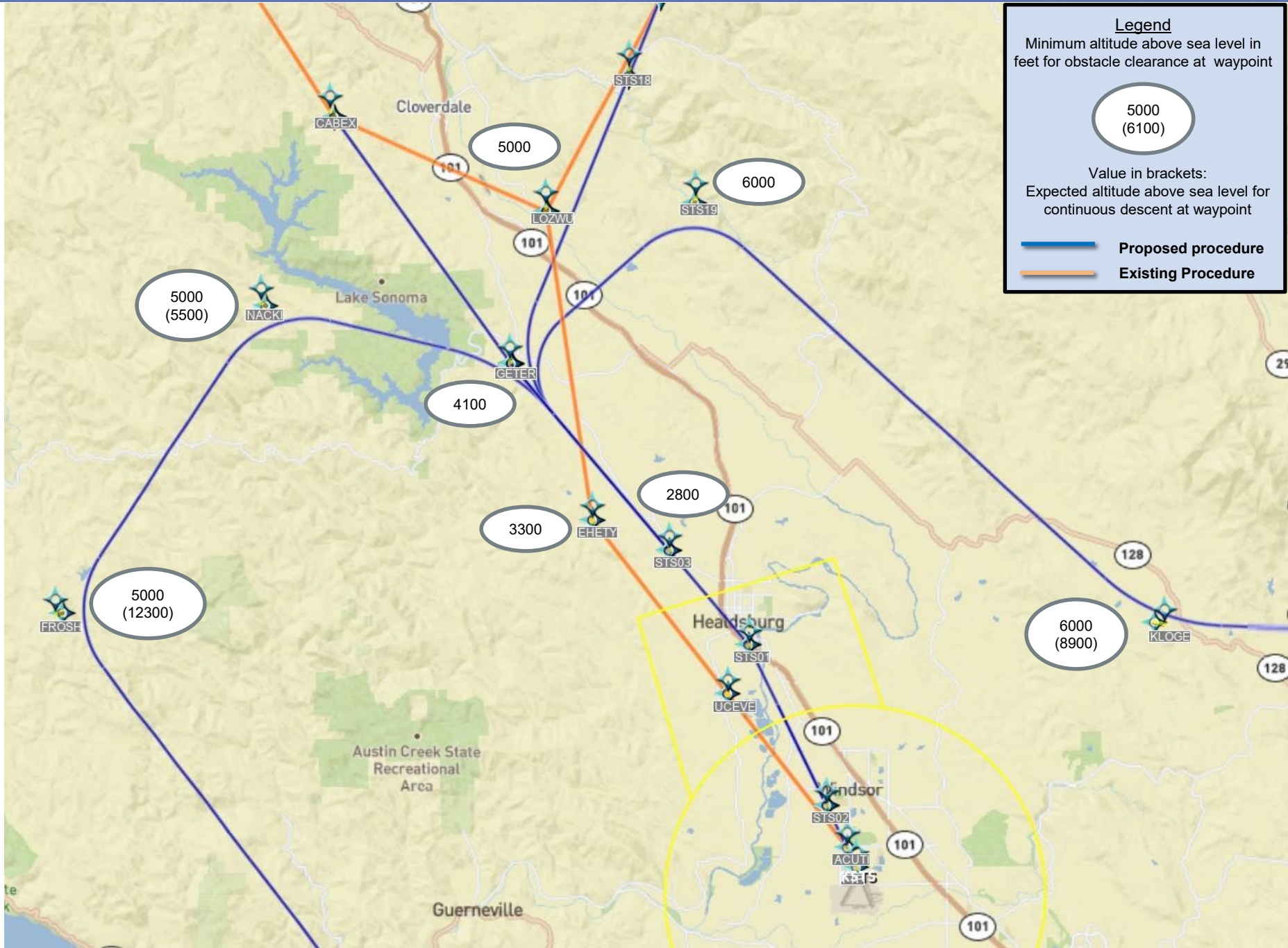
Legend
Minimum altitude above sea level in feet for obstacle clearance at waypoint

5000
(6100)

Value in brackets:
Expected altitude above sea level for continuous descent at waypoint

Proposed procedure

RWY 14 – Proposed procedure overlaid on current 10



Legend

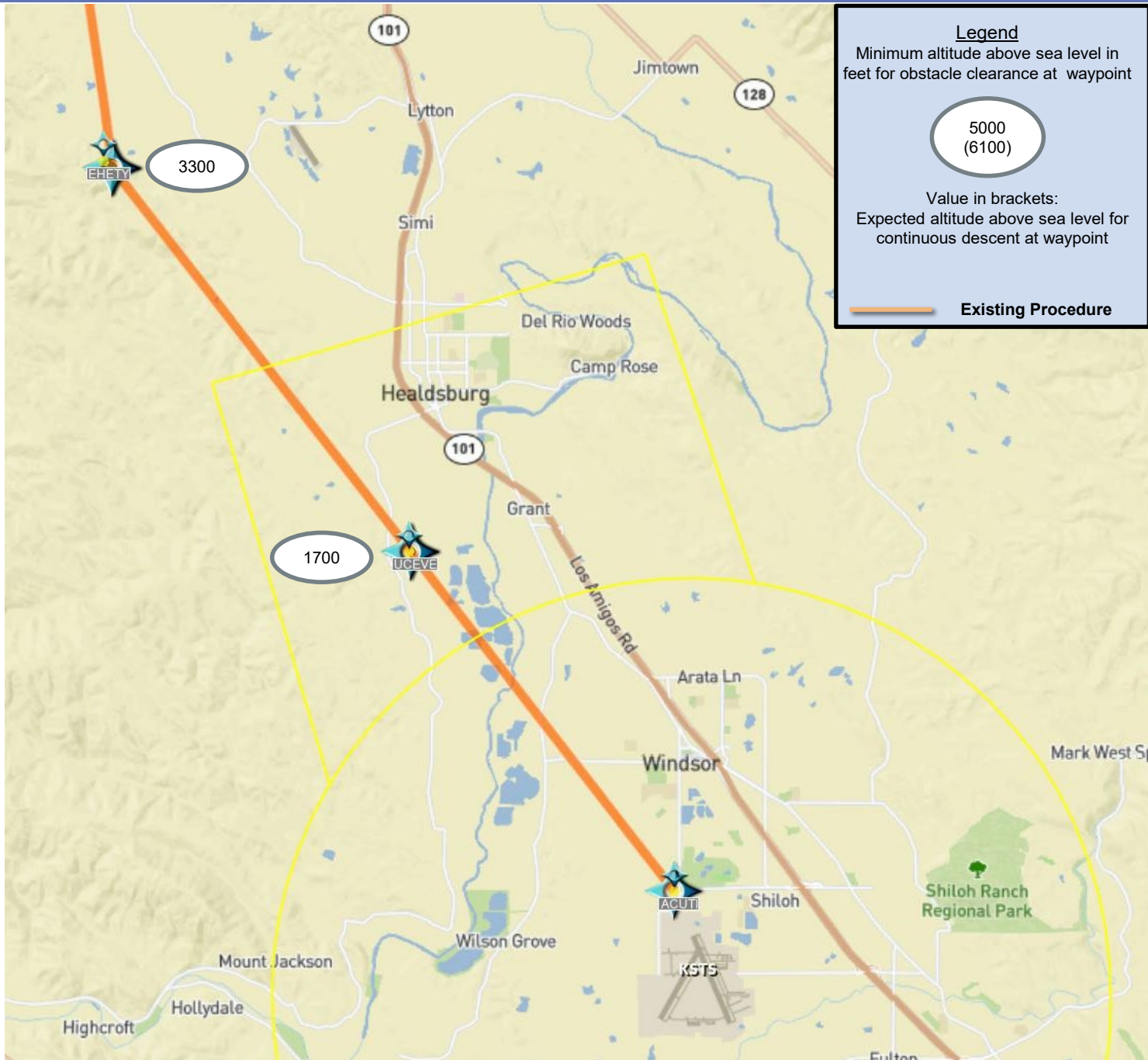
Minimum altitude above sea level in feet for obstacle clearance at waypoint

5000
(6100)

Value in brackets:
Expected altitude above sea level for continuous descent at waypoint

Proposed procedure

Existing Procedure



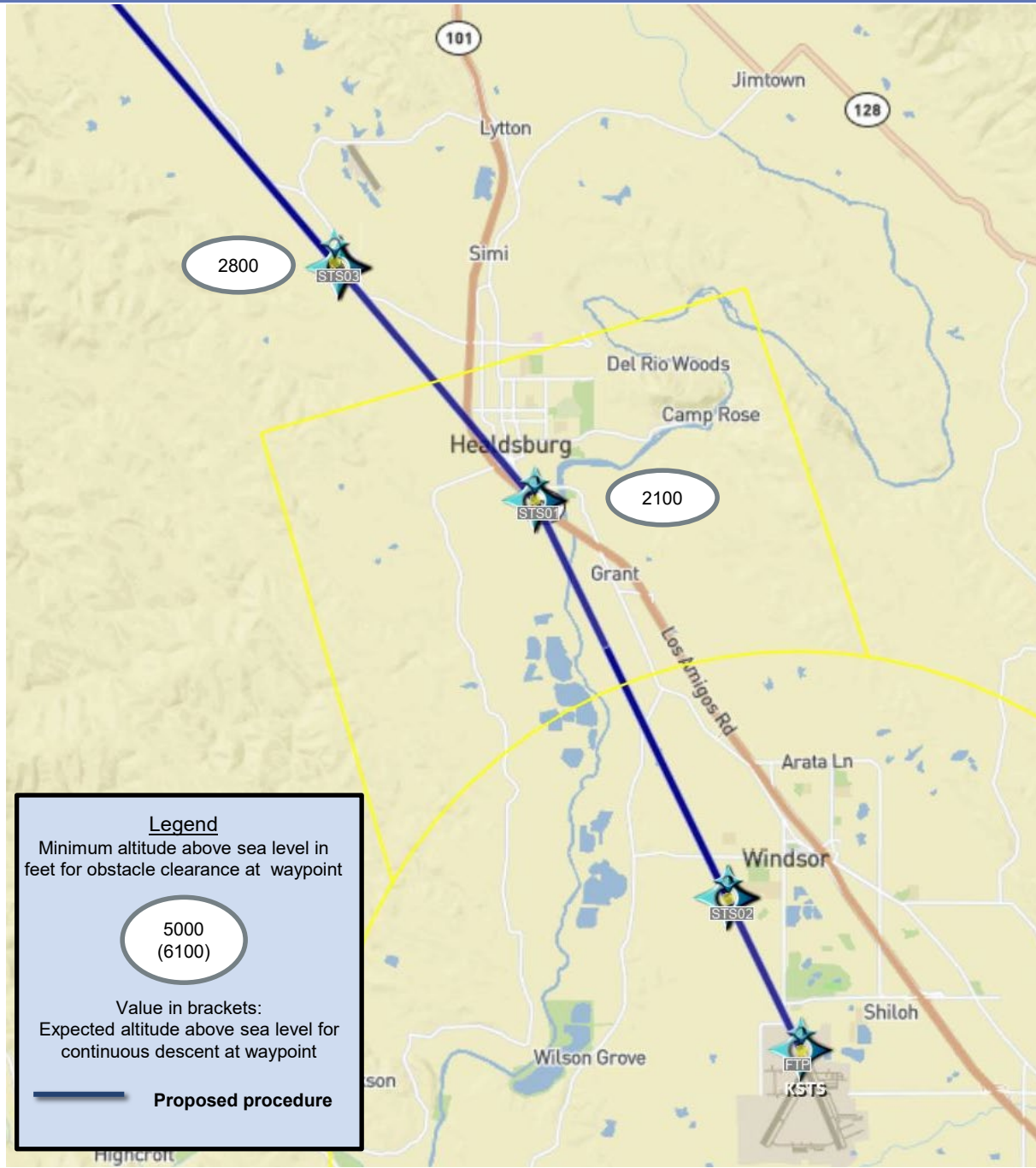
Legend

Minimum altitude above sea level in feet for obstacle clearance at waypoint

5000
(6100)

Value in brackets:
Expected altitude above sea level for continuous descent at waypoint

Existing Procedure



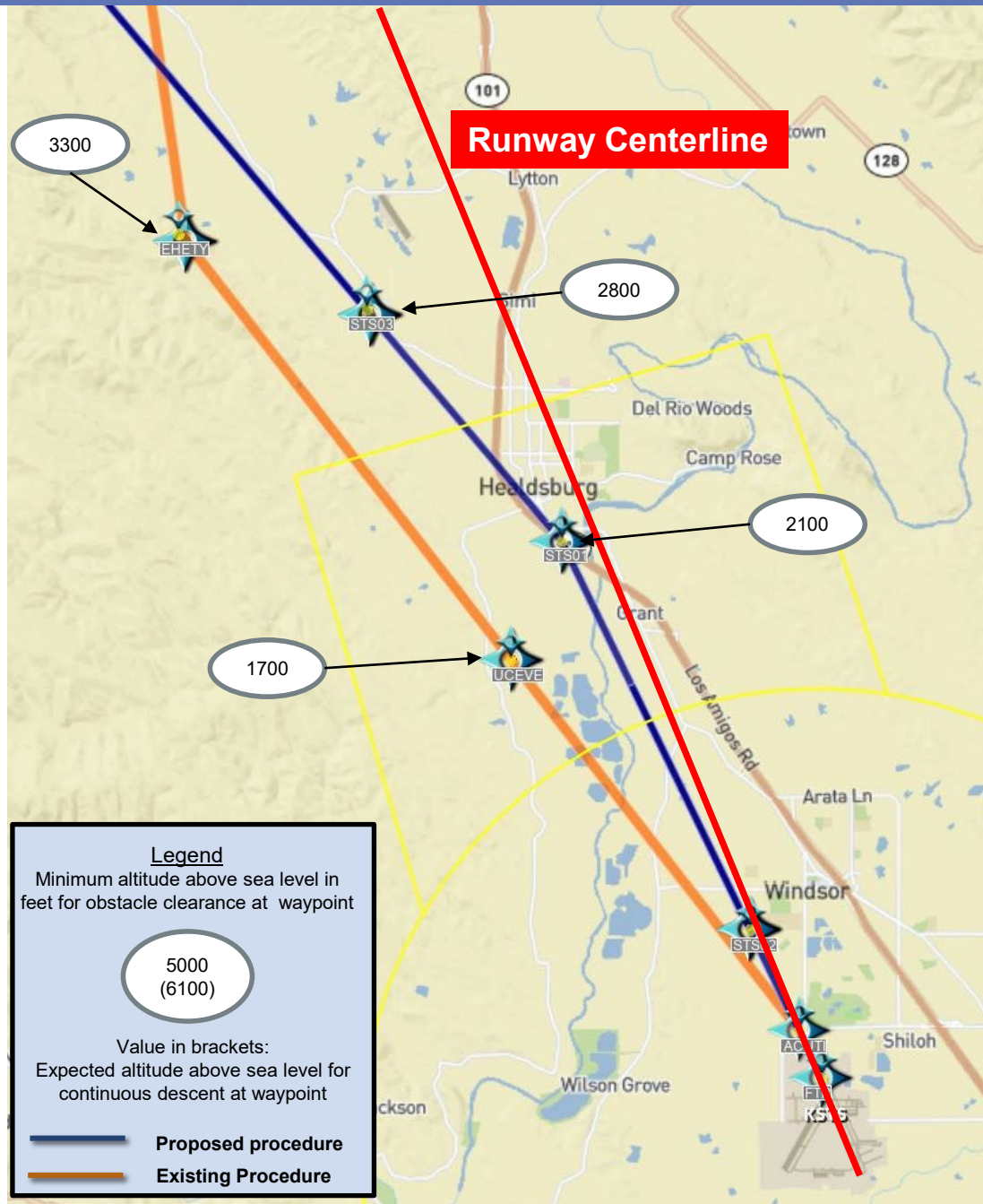
Legend

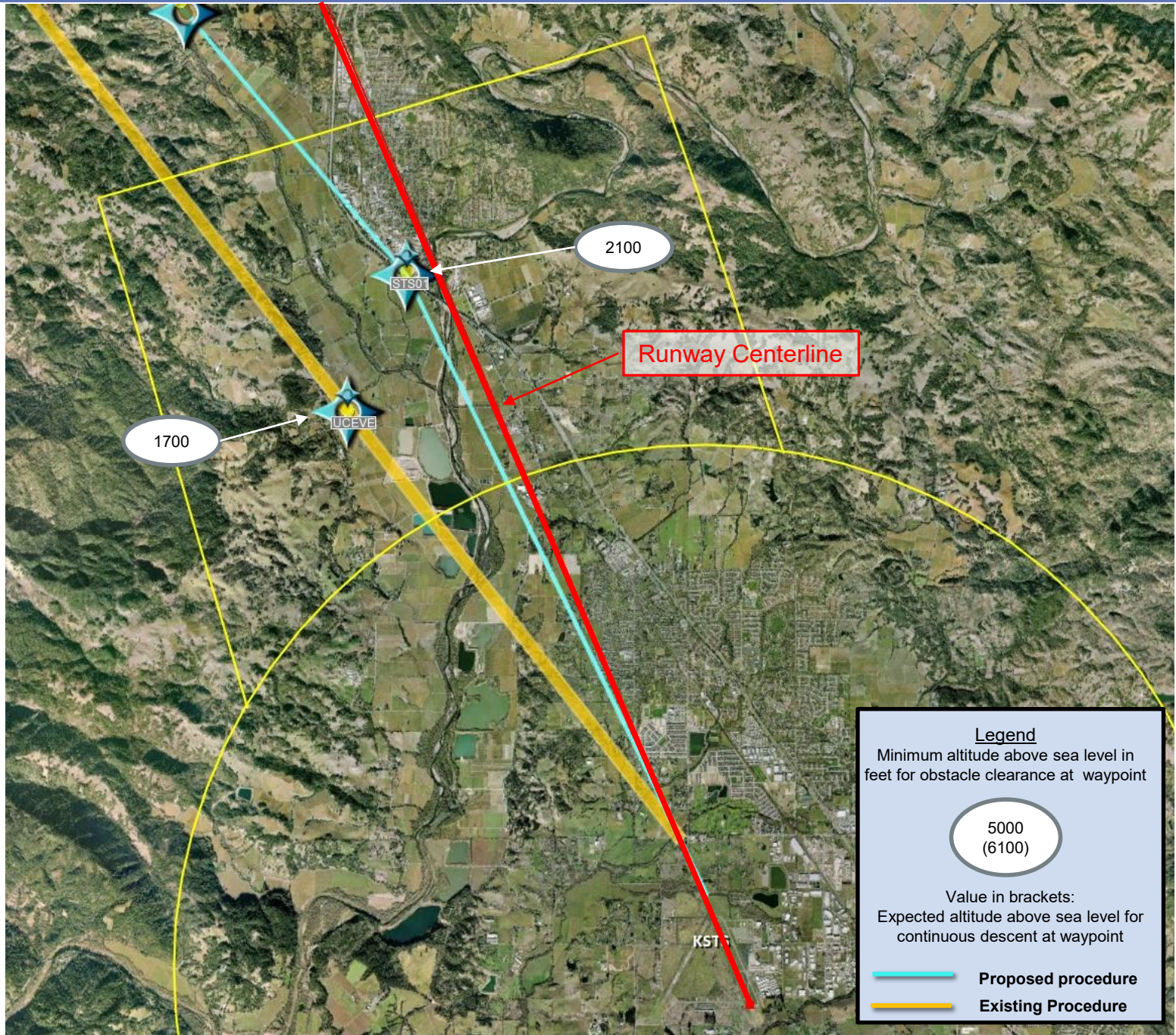
Minimum altitude above sea level in feet for obstacle clearance at waypoint

5000
(6100)

Value in brackets:
Expected altitude above sea level for continuous descent at waypoint

Proposed procedure





Legend

Minimum altitude above sea level in feet for obstacle clearance at waypoint

5000
(6100)

Value in brackets:
Expected altitude above sea level for continuous descent at waypoint

- Proposed procedure
- Existing Procedure