



BASELINE REVIEW WEBINAR

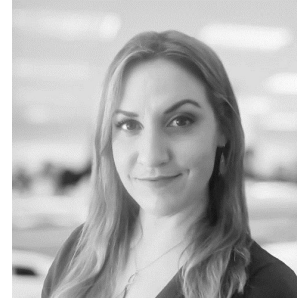
NOVEMBER 15, 2024

*CHARLES M. SCHULZ SONOMA COUNTY
AIRPORT SUSTAINABILITY MANAGEMENT
PLAN*

Sustainability Personnel



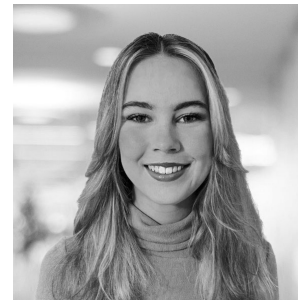
NATHAN STINETTE, SEP,
ENV-SP, URBAN GHG SPECIALIST
ENVIRONMENTAL CONSULTANT II
SUSTAINABILITY PROFESSIONAL



KARIN BOULTER
SENIOR ENVIRONMENTAL PLANNER
ENVIRONMENTAL SPECIALIST, AVIATION



CASSIDY NOSENZO, ENV-SP
ENVIRONMENTAL CONSULTING
ASSOCIATE II
SUSTAINABILITY PROFESSIONAL



GABRIELLE MCGRATH, ENV-SP
ENVIRONMENTAL CONSULTING
ASSOCIATE I
SUSTAINABILITY PROFESSIONAL

AGENDA

Webinar Purpose (5 min)



County of Sonoma Context (10 min)



Overview of SMP (10 min)



Baseline Review, Goals and Initiatives Discussion (60 min)

Energy and Emissions

Materials Management

Environmental Stewardship

Finance and Governance

Social Responsibility



Next Steps (5 min)

Meeting Format

- Submit questions through the Q&A function
 - We will pause to address questions throughout the presentation
 - Any unanswered questions will be summarized and answered after the workshop, a PDF will be posted on the SMP webpage
- Several polls have been included
 - Use your smartphone or computer to respond to polls (anonymous)
- A feedback form will be provided at the end for any additional thoughts/questions
 - This form will remain open for 2 weeks after the webinar
- Please use the transcript/translation feature for accommodation purposes

Today's Objectives

Understand the background of the Sustainability Management Plan

Review sustainability progress at STS

Share and gain feedback on sustainability goals and initiatives for STS

Climate Resilience Comprehensive Action Plan – County of Sonoma



Climate Action and Resiliency Pillar Goals

- Invest in wildfire resilience and preparedness
- Invest in community resilience and carbon neutrality
- Make County facilities carbon free, zero waste and resilient
- Maximize sustainability and emissions reductions in all County Fleet vehicles
- Maximize opportunities for adaptation through land conservation work and land use policies



Path to Carbon Neutral, Zero Waste, and Climate Resilient



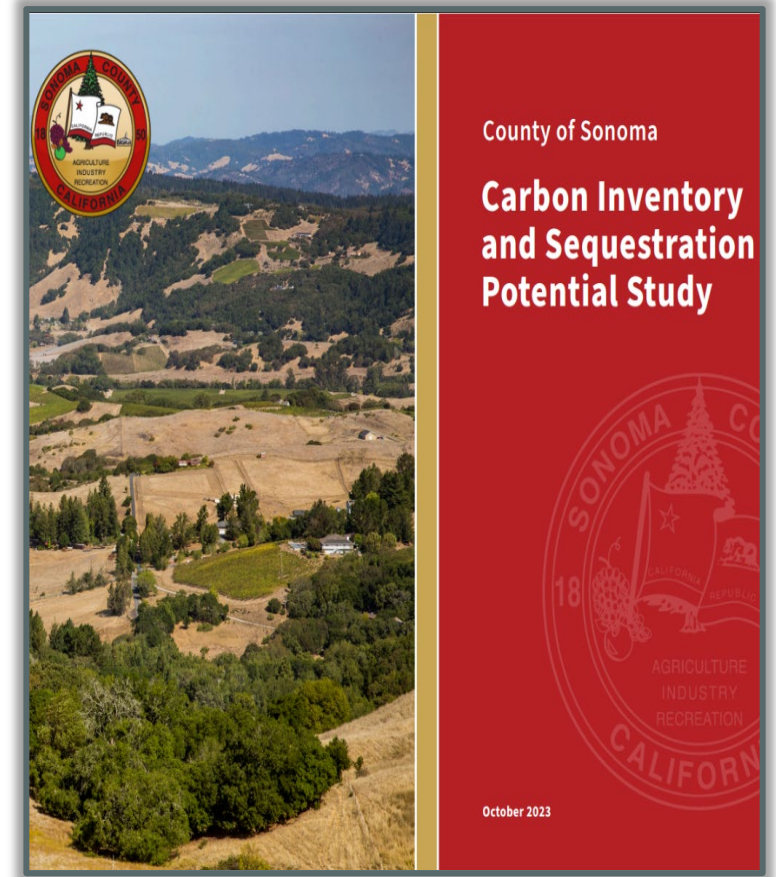
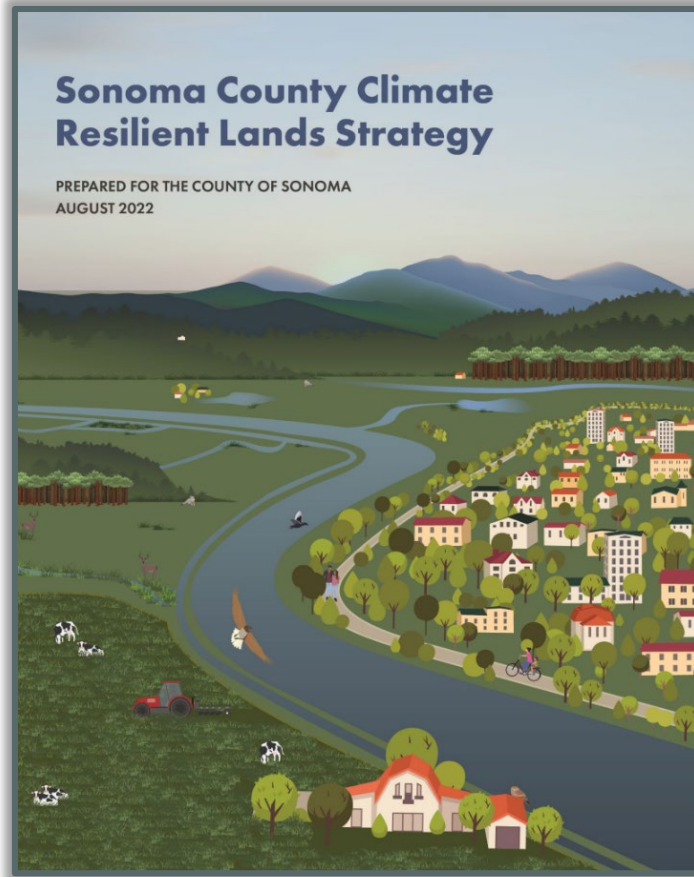
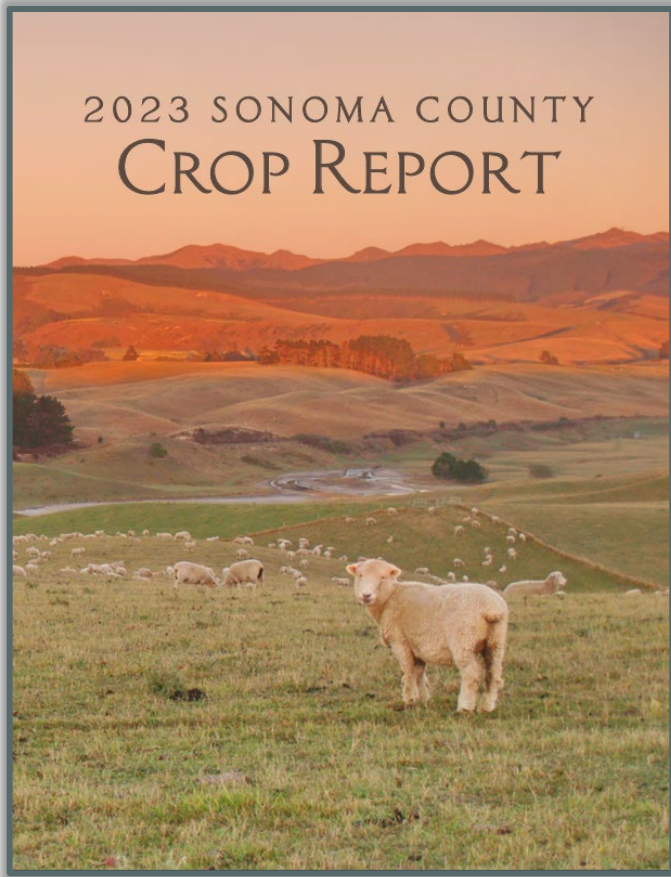
Near- Term Measures
(2024-2026)



Mid-Term Measures
(2027-2030)



Long-Term Measures
(2030+)



County Resources and Support

County of Sonoma Climate Plan Measures

Built Environment Solutions (Mitigation)

Energy



Transportation



Zero Waste



Nature-based Solutions (Adaptation)

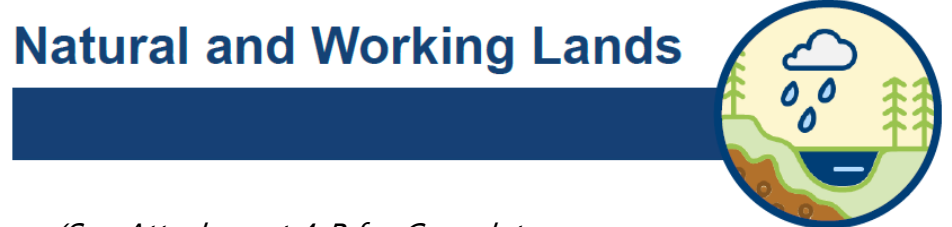
Water



Wildfire



Natural and Working Lands



(See Attachment 4-B for Complete Measures)

County Climate Action Plan: Approved September 2024



Climate Resilience Comprehensive Action Plan

County of Sonoma
County Administrator's Office
August 2024



COUNTY OF SONOMA
Climate Action and Resiliency

- \$2.27MM in Funding Approved for Near-Term Measures
- \$460,000 for the Community Engagement Strategy (2024-2026)
- CARD Reorganization in County Administrator's Office

Community Climate Plan

Community Engagement Strategy

- Advisory Committee of Community Voices
- Collaborative Engagement
- Culturally Relevant Venues & Events
- Identify Priorities, Needs, Barriers, Opportunities
- **Prepare Prioritized Recommended Actions for County Support of Community Climate Resilience**



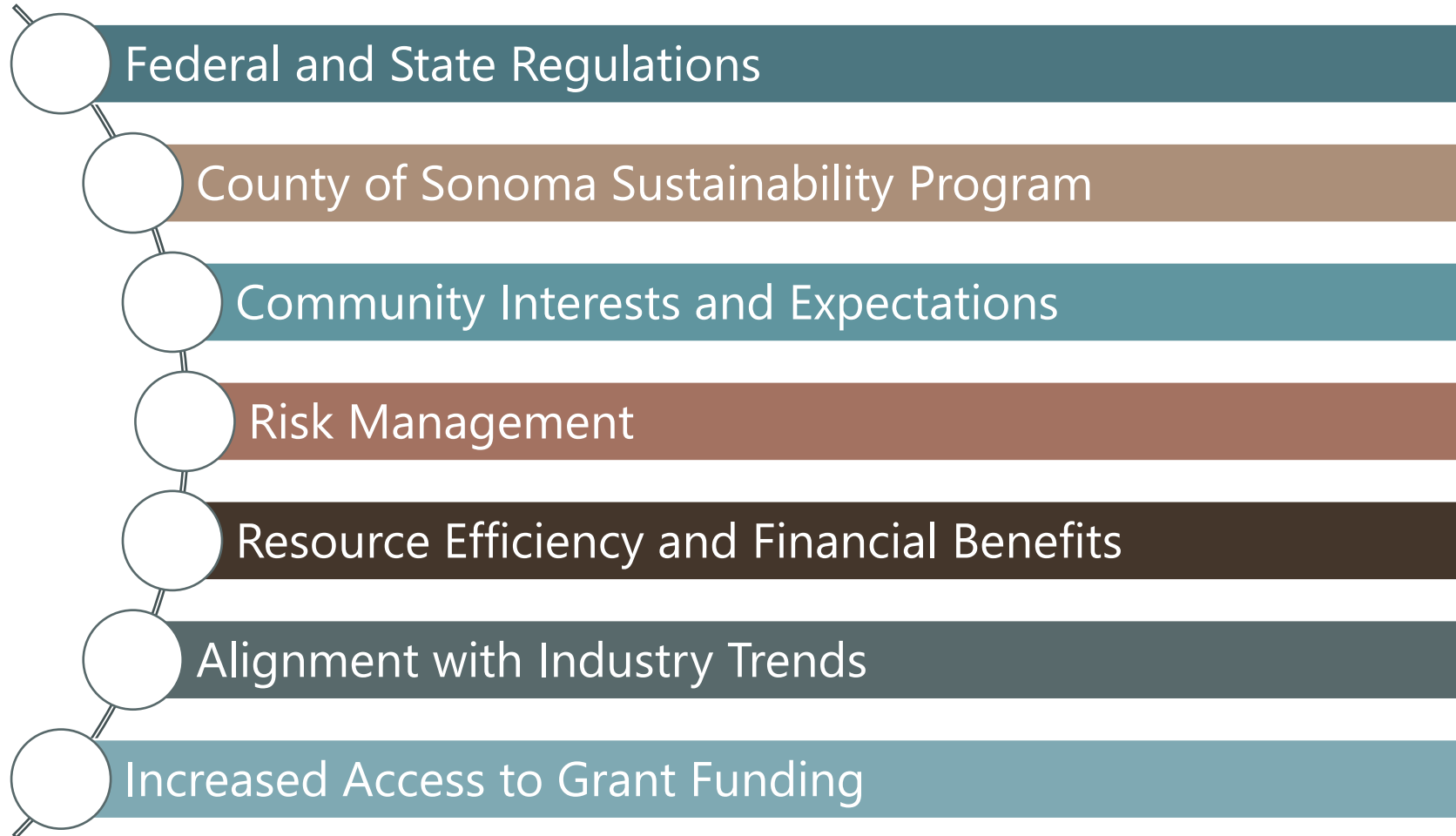
SMP Project Background



Sustainability Through an Airport Lens: EONS

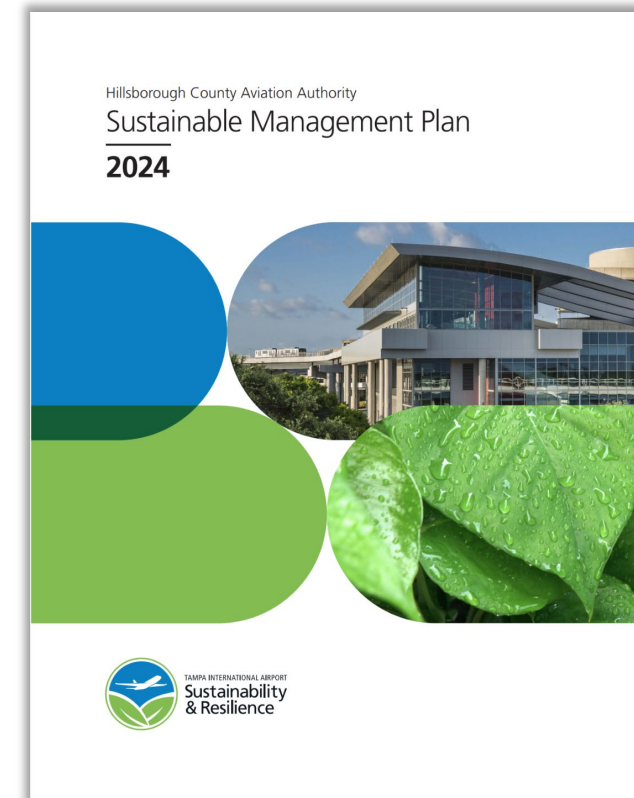


Sustainability Drivers

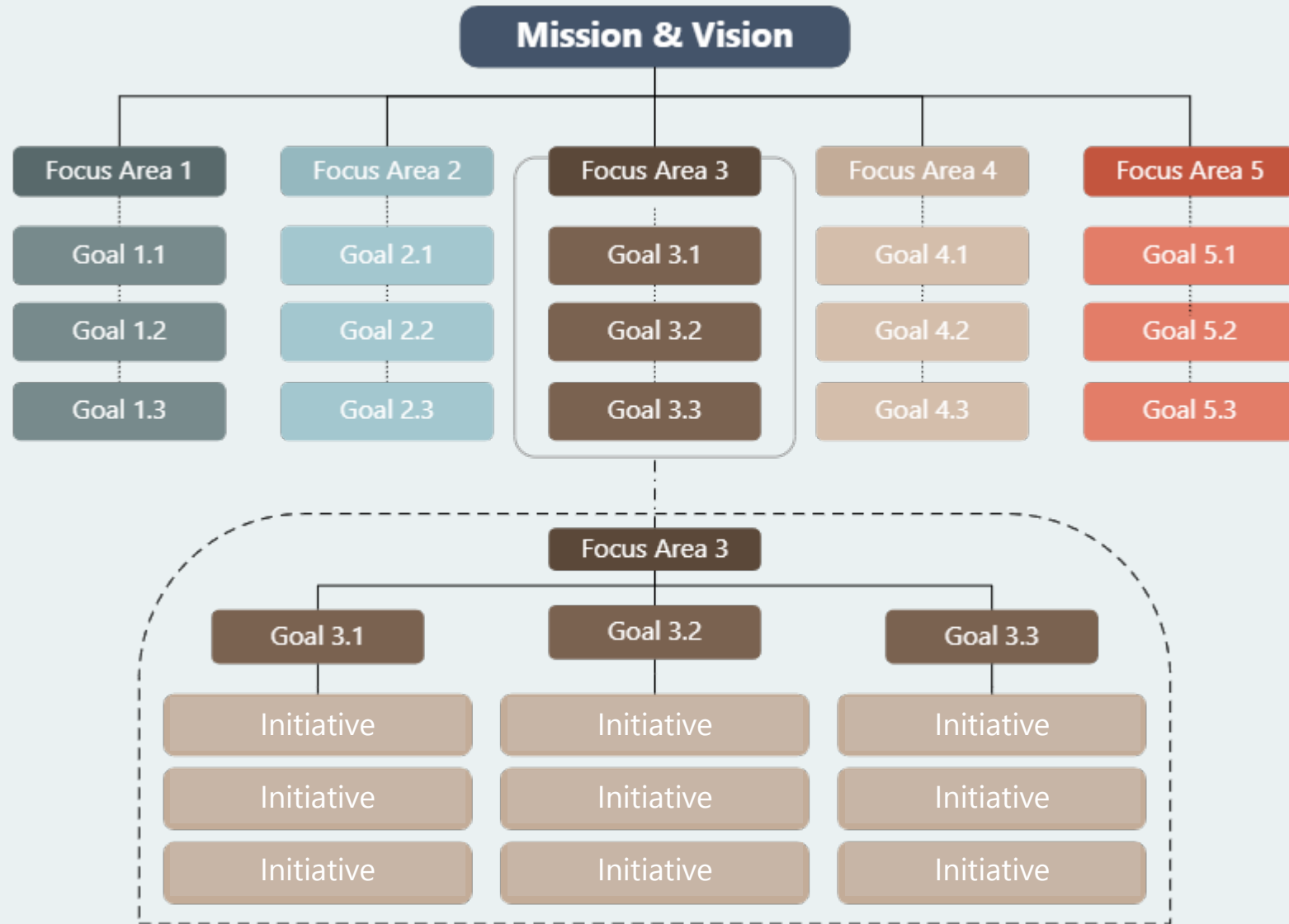


Elements of a Sustainability Management Plan (SMP)

- Sustainability Mission and Vision
- Focus Areas
- Baseline Assessment
- Goals
- Project Development
- Implementation



SMP Structure



Sustainability Mission and Vision

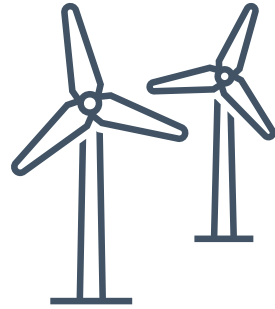
Mission

To serve our community by sustainably operating the Charles M. Schulz Airport, emphasizing safety, economic viability, and responsible stewardship of natural resources.

Vision

To provide innovative, sustainable, and resilient aviation services for future generations of Sonoma County residents and visitors.

Focus Areas



Energy and Emissions



Materials Management



Environmental Stewardship



Finance and Governance




Social Responsibility

Alignment with County of Sonoma

		County of Sonoma Strategic Plan Pillars				
		Climate Action and Resiliency	Healthy and Safe Communities	Organizational Excellence	Racial Equity and Social Justice	Resilient Infrastructure
STS SMP Focus Areas	Energy and Emissions	✓	✓			✓
	Materials Management	✓	✓	✓		
	Environmental Stewardship	✓	✓			
	Finance and Governance			✓	✓	✓
	Social Responsibility		✓	✓	✓	✓

Focus Areas



An aerial photograph of a large solar farm. The solar panels are arranged in long, parallel rows that recede into the distance. The panels have a dark blue or purple hue, and the grid lines are clearly visible. The text "ENERGY AND EMISSIONS" is overlaid in white, bold, sans-serif font on the left side of the image.

ENERGY AND EMISSIONS

Energy Emissions Overview

Renewable
Energy

Energy Use

Resource
Efficient
Buildings

Fleet Efficiency

Electric Vehicle
Infrastructure

Carbon
Reduction
Policies

Sustainability Successes: Solar Production

4.03 GWh of energy generated since its implementation in 2022



Equivalent to:



312,851 Gallons of Gasoline

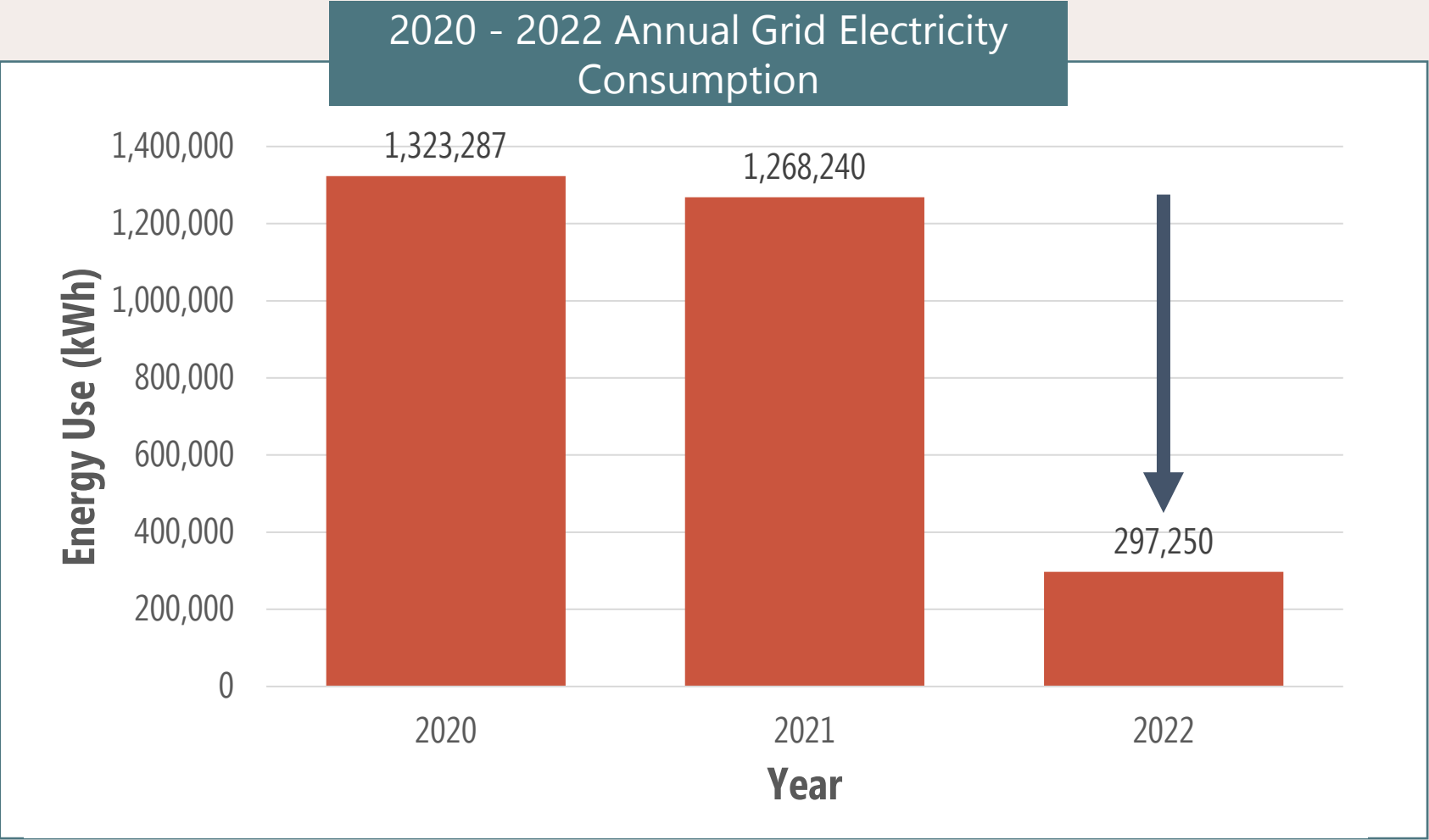


71,290 Trees Planted



2.02 Million Gallons of Water Saved

Solar Production and Electricity Offset



Sustainability Successes: The Good Traveler

ESTIMATE YOUR FLIGHT'S CARBON IMPACT

By Distance

DEPARTURE AIRPORT ARRIVAL AIRPORT

[ADD A FLIGHT LEG](#)


Flight Details

▲ 1 NUMBER OF TRAVELERS ▼


ONE WAY ROUND TRIP

OFFSET = \$0

* The Good Traveler has a minimum charge of \$3.


[PURCHASE CARBON OFFSETS](#) 

YOUR OFFSET:



0

MILES OF FLIGHT



ESTIMATED

0 KG

OF CARBON DIOXIDE

[See details](#)

Sustainability Successes: Energy and Emissions



Sustainable Aviation Fuel (SAF) offered through FBOs at Airport



Fleet Electrification in Progress



Electric Vehicle charging stations



Airport lighting has transitioned to LED

Energy and Emissions Proposed Goals



Reduce energy use and increase resilience at existing airport facilities by achieving a 15% reduction in electricity use by 2030 from the 2021 baseline.



Support county net zero goal by reducing Scope 1 and 2 airport GHG emissions 90% by 2030, compared to a 2021 Baseline, and offsetting any remaining emissions.



Replace 50% of airport light duty trucks, non-road vehicles and equipment with electric, hybrid, zero emission or CARB compliant equivalents by 2030.



Install EVSE at the airport to support airport fleet electrification by 2030.

Potential Initiatives and Areas for Improvement

Increasing Energy Efficiency of Buildings

Investing in Additional Clean Energy or Offsets to Reduce GHG Emissions

Promoting The Good Traveler Program

Participating in Third Party Sustainability Verification Programs (ACA, Envision, LEED)

Creating an Electrification Plan for Airport Vehicles





MATERIALS MANAGEMENT

Materials Management Overview

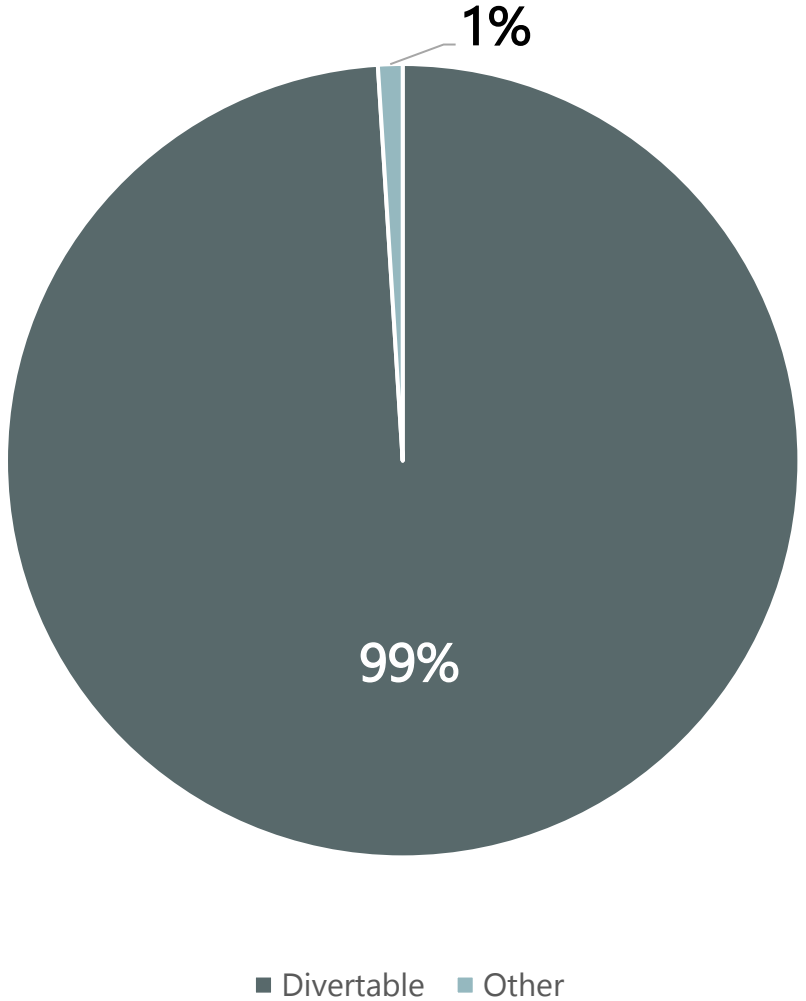
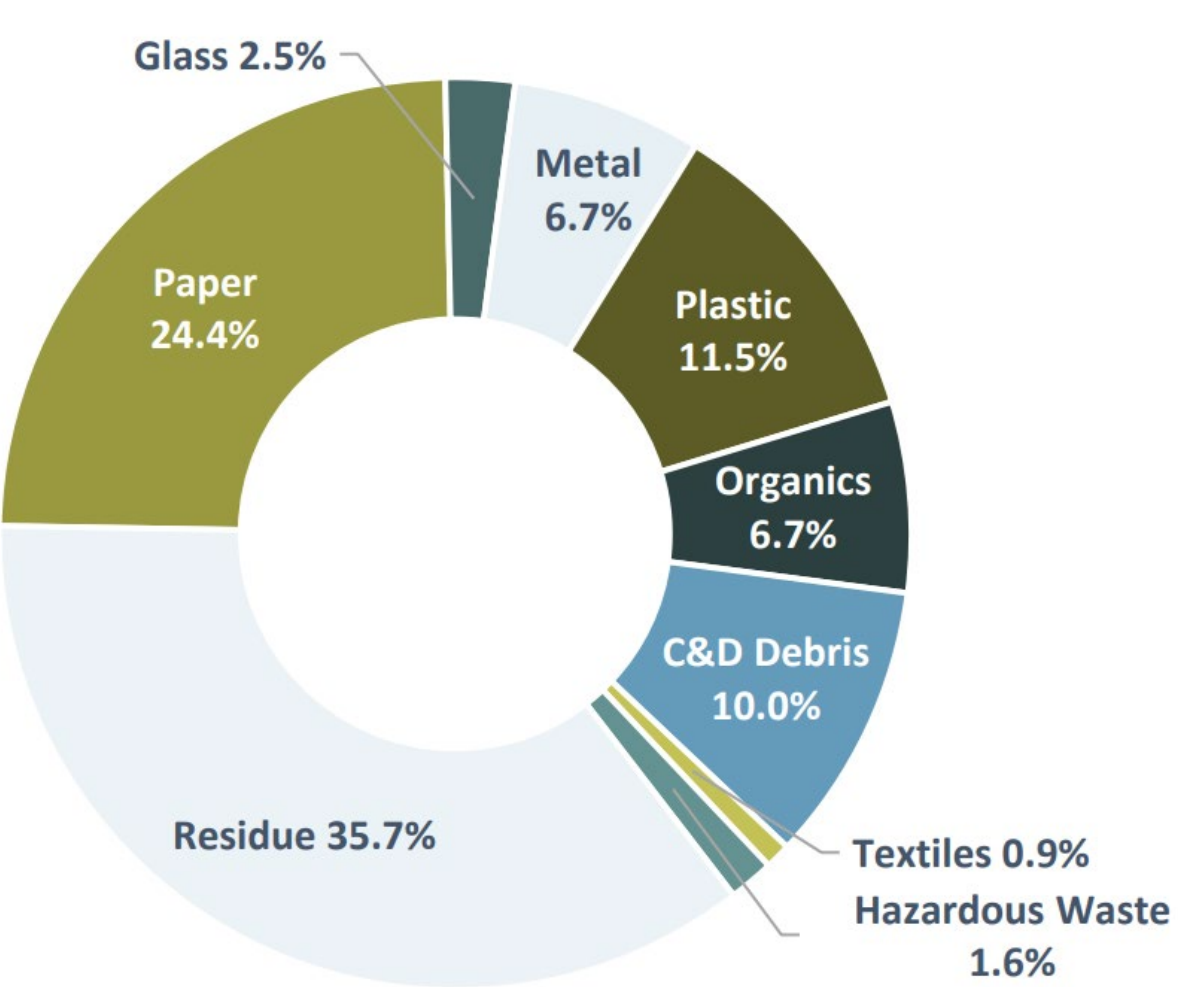
Solid Waste

Recycling

**Construction &
Demolition Waste**

Composting

Sustainability Successes: Materials Management



Sustainability Successes: Materials Management



Triple-stream Bins are located throughout the Airport, encouraging passengers to dispose of their waste in the appropriate bins.



Materials Management Proposed Goals



Track, document, and achieve waste diversion rates in line with applicable county and state targets by 2030.



Develop and implement a communications campaign to motivate travelers to divert recyclable and organic wastes, and work with airport tenants to increase recycling and compost diversion by 2030.



Require construction contractors to achieve a 75% construction and demolition waste diversion rate (or the rate set by Sonoma County if higher), for all major airport construction and renovation projects by 2030

Potential Initiatives and Areas for Improvement

Implement Training Programs for Staff and Partners to Increase Diversion Rates

Engage in a Food Donation Program

Develop a Recycling Implementation Plan

Require Contractors to Adhere to a Waste Diversion Policy Through Construction

Engage with the Community to Promote Proper Usage of Waste Bins





ENVIRONMENTAL STEWARDSHIP

Environmental Stewardship Overview

Water Use

Stormwater
Management

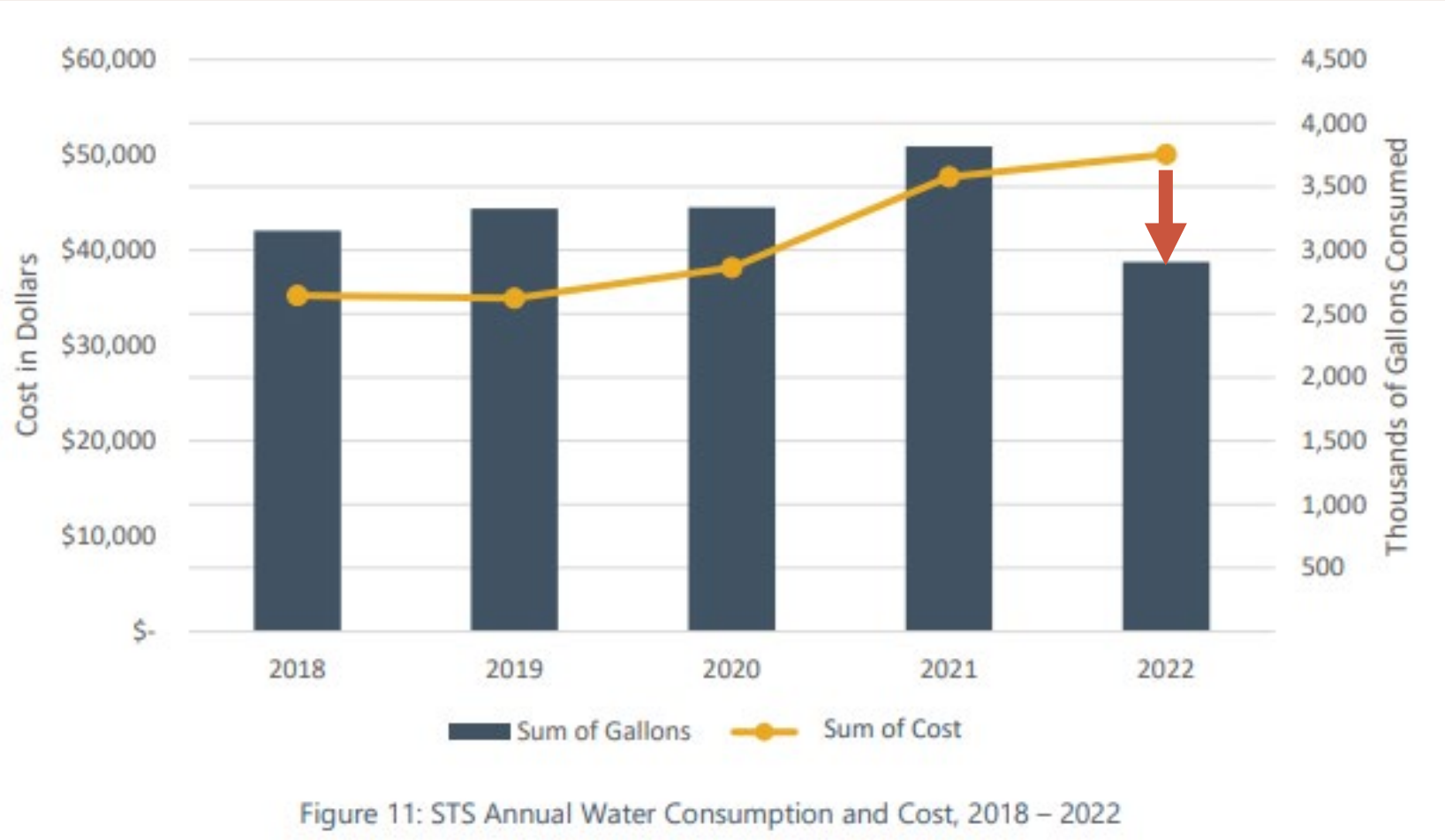
Wildfire
Mitigation

Air Quality

Indoor
Environmental
Quality

Landscaping

Sustainability Successes:



Sustainability Successes: Wildfire Resilience

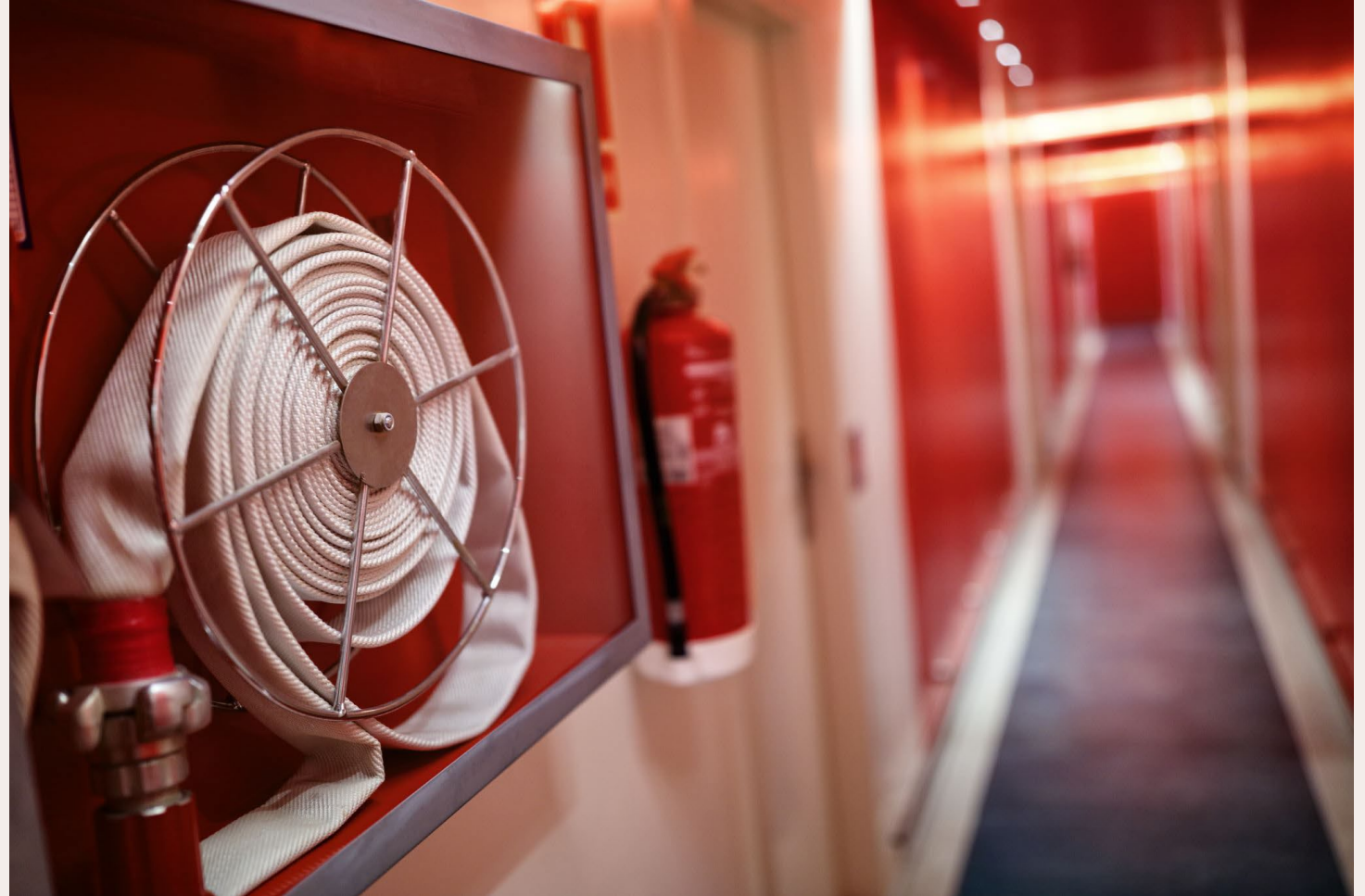


400 Eucalyptus
Trees Removed in 2022

1,800 Expected
to be Removed in the
Future

Sustainability Successes: PFAS Elimination

Replacing all PFAS containing firefighting foam with non-PFAS foam by the end of the first quarter



Environmental Stewardship Proposed Goals



Evaluate, prioritize, and implement water saving features into new and existing facilities and operations at the Airport by 2030.



Identify and implement methods to increase defensible space and harden airport buildings against wildfire in line with the county Wildfire Resilience Project by 2030.



Increase biodiversity on the airport property, promote native and pollinator friendly species, remove invasive species, and integrate best practices into land management activities by 2030.



Identify opportunities to improve carbon sequestration on airport property and begin implementing beneficial practices described in the Carbon Stock Inventory and Potential Sequestration Study by 2030.

Potential Initiatives and Areas for Improvement

Continue to Follow Low Impact Development and Green Infrastructure Requirements

Pursue Wildfire Mitigation Opportunities

Manage Airport Land in a Way That Sequesters Carbon

Integrate Sustainable Landscaping (Native Species, Pollinators, etc.)

Perform a Water Audit to Increase Water Efficiency



FINANCE AND GOVERNANCE

The background of the slide is a collage of financial data visualizations. It features a dark blue grid with several lines and bar charts. A prominent orange line graph is visible in the upper right, showing a fluctuating trend. Below it, there are bar charts with red and teal bars. The overall aesthetic is professional and data-driven.

Finance and Governance Overview

Revenue Sources

Funding Opportunities

Sustainable Purchasing

Capital Improvement Planning

Resilience

Sustainability Successes: Regional Economic Driver

Supports

1,788

Jobs Annually

Generates

\$92.4 mil

In Payroll

Generates

\$34.6 mil

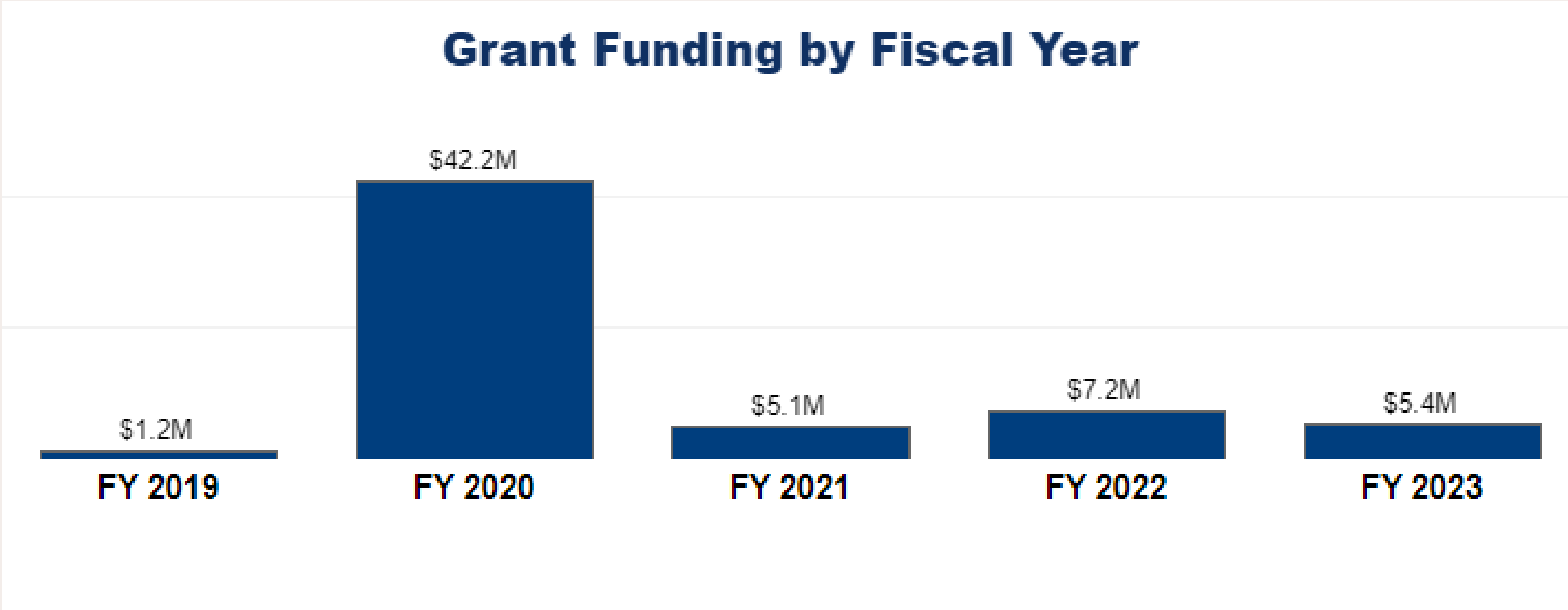
In Tax Revenue

Creates

\$231.0 mil

In Economic Output for the County

Sustainability Successes: Federal Funding



Sustainability Successes: Green Business Policies



Charles M. Schulz–Sonoma County Airport

Environmental Policy Statement

We strive to incorporate sustainability into our core operations through internal and external efforts. Specifically, we adopt the following policies and practices:

1. Reduce, Reuse, and Recycle.
2. Avoid the use of toxic chemicals.
3. Conserve energy, water, natural resources, and move away from fossil fuels where possible.
4. Promote environmental education, outreach, and awareness to our staff.

Finance and Governance Proposed Goals



Secure grant funding and develop a climate resilience assessment and adaptation plan for the airport by 2030.



Update the current sustainable procurement policy and improve implementation for the airport and achieve 50% of qualifying purchases meet sustainable criteria by 2030.



Develop Sustainability Design Criteria or pursue sustainability in new construction through third party certifications by 2030 (i.e., LEED, Envision, Airport Carbon Accreditation, etc.).



Support and prepare for aviation sector transition to clean fuels and electrification by 2030.

Potential Initiatives and Areas for Improvement

Acquire Federal Funding for a Climate Vulnerability and Adaptation Plan

Incorporate Sustainability Requirements into Selection Criteria for Tenants and in RFPs

Improve Implementation of Existing Environmental Policy

Integrate Sustainable Design Standards into CIP Projects

Complete Planning Studies for the Integration of SAF, Unleaded AvGas, and eVTOL into Operations



SOCIAL RESPONSIBILITY



Social Responsibility Overview

Employee
Attraction and
Retention

Workforce
Development

Community
Engagement

Public
Transportation

Partnerships

Diversity,
Equity, and
Inclusion

Sustainability Successes: Community Engagement



Charles M. Schulz - Sonoma County Airport Napa to Sonoma Wine Country Half Marathon 2024
 Sonoma, US
 July 21, 2024



YOUNG EAGLES RALLY
 In Conjunction With:
GIRLS IN AVIATION DAY
 ★★★
AIRCRAFT! ACTIVITIES! FOOD!



FREE FLIGHTS FOR KIDS!
 (ages 8-17, registration recommended for flights)
SATURDAY, SEPTEMBER 21ST
9 AM - 2 PM



Charles M. Schulz
 Sonoma County Airport

JOB FAIR
 Tuesday, APRIL 26TH 1PM - 4PM



SONOMA JET CENTER
 Parking located in Long Term Parking Lot B. **FREE PARKING** for the first two hours!

- RESUME HELP ON-SITE •
- INTERPRETACIÓN EN ESPAÑOL •






more information, or to request reasonable accommodation, call 707-565-7243, or email airport@sonoma-county.org

Sustainability Successes: Supporting Local Art and Business



Sustainability Successes: STS Good Neighbor Program



- 
NOISE PROGRAM STATISTICS
- 
HOW TO SUBMIT A NOISE COMPLAINT
- 
SUBMIT A NOISE COMPLAINT
- 
FREQUENTLY ASKED QUESTIONS
- 
CONTACT STS GOOD NEIGHBOR
- 
STS APPROACH STUDY

Sustainability Successes: Disadvantaged Business Enterprise (DBE) Proposed Goal

5.4%

FY 2025-2027

This goal represents the percentage of work anticipated to be performed by certified DBE firms on the Airport's FAA-assisted projects.

Social Responsibility Proposed Goals



Provide sustainability, DEI, and workforce development training for airport staff and require it for new hires and current employees by 2030.



Develop outreach campaign for airport tenants and stakeholders aligned with county campaigns on energy efficiency, electrification, renewable energy, and energy storage; and encourage tenants/stakeholders to adopt green business certification program, by 2030.



Increase community awareness of STS's sustainability program and accomplishments by developing and implementing a targeted sustainability communications program by 2030.

Potential Initiatives and Areas for Improvement

Increase Airport
Accessibility Through
Public Transit

Increase Internal
Workforce
Development

Provide and Track
Sustainability and DEI
Training to Employees

Engage Tenants and
Concessionaires to
Increase Sustainability

Establish a
Communication Plan to
Effectively and Equitably
Engage the Community

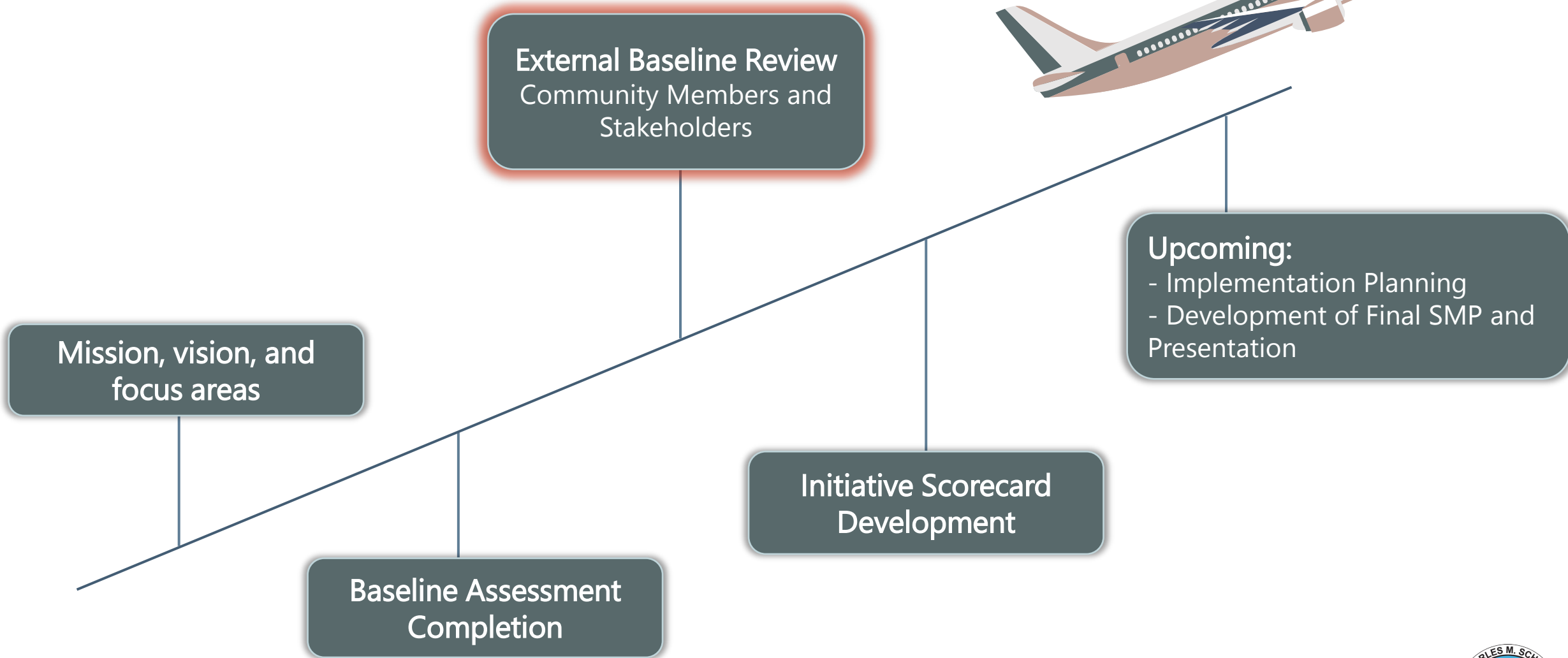
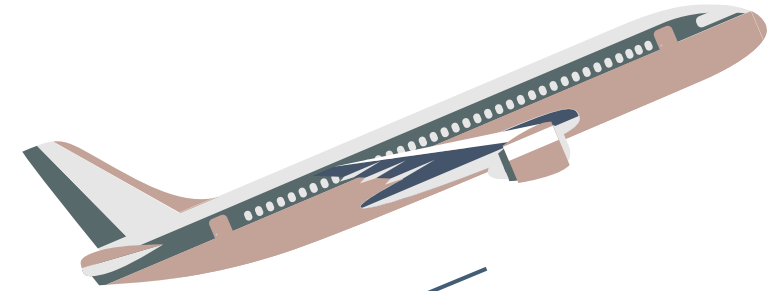
Provide Displays and
Informational Services
to Passengers
Regarding Sustainability



Next Steps



Next Steps



QUESTIONS OR FEEDBACK?

STS Baseline Review Webinar
Feedback Form

