



Charles M. Schulz – Sonoma County Airport
2290 Airport Boulevard
Santa Rosa, CA 95403
Ph: 707.565.7243

www.sonomacountyairport.org

Charles M. Schulz – Sonoma County Airport (STS)

Aircraft Noise Monthly Report

November 2023



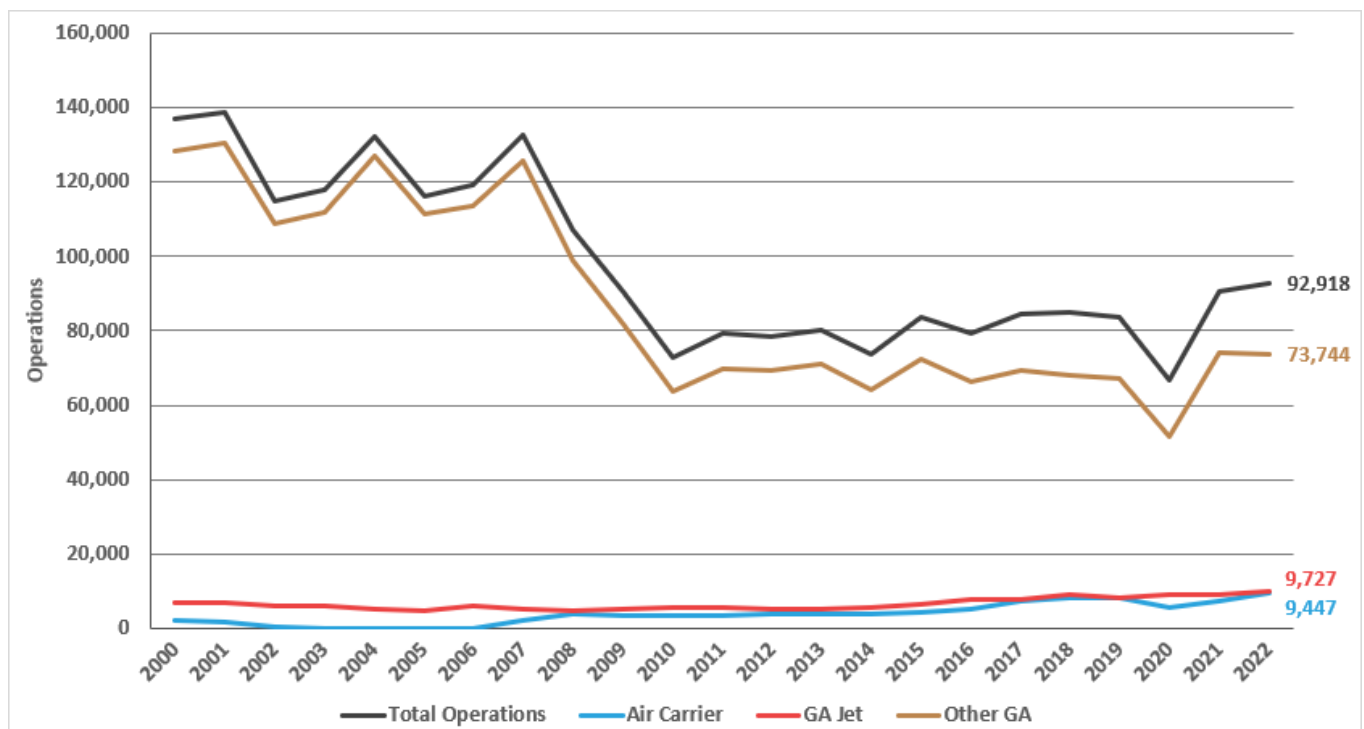
About the Charles M. Schulz – Sonoma County Airport and Noise Abatement

The Airport operates as a self-supporting Enterprise Fund within the Department of Transportation and Public Works and under the jurisdiction of the Federal Aviation Administration (FAA). STS is both a general aviation facility, serving private planes and business jets, and is a commercial airline facility with scheduled air service. STS generates over \$1,300,000 annually in tax revenues, via its users, for Sonoma County and County School Districts.

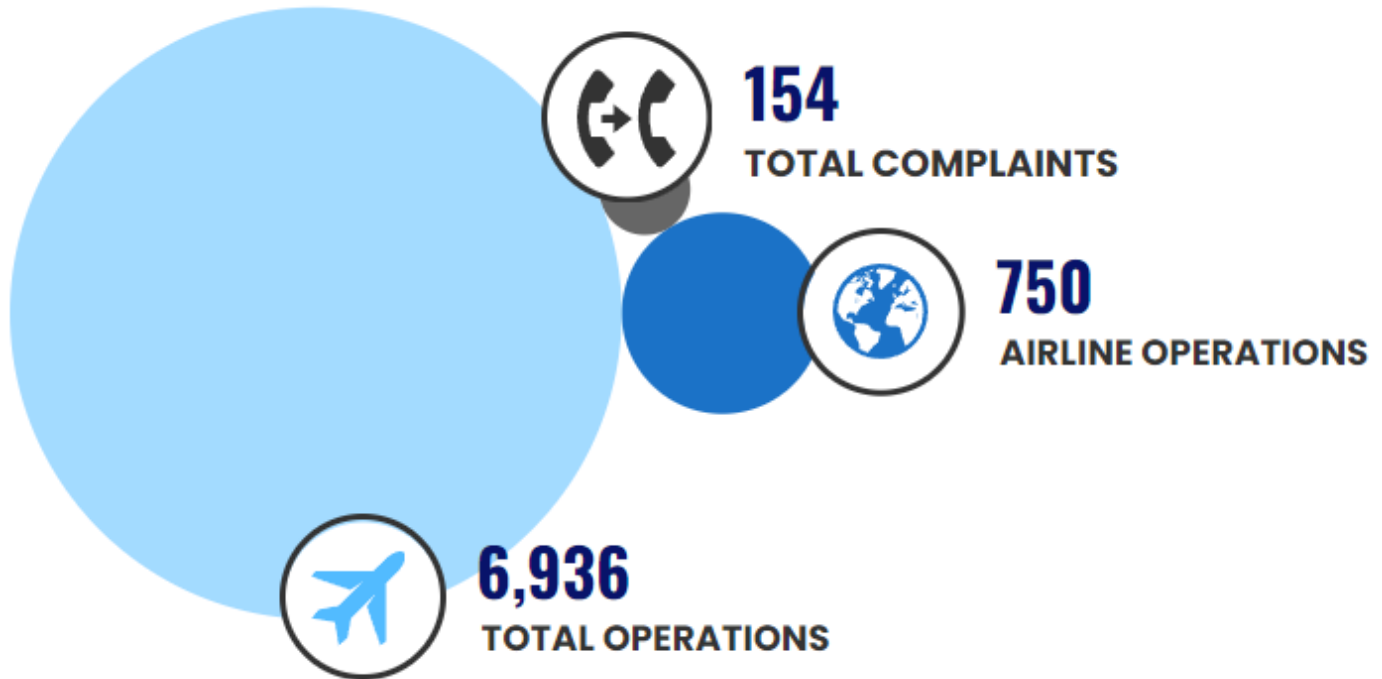
The Airport’s current Noise Abatement Program was established in 1988. STS also works within FAA guidelines, to encourage pilots and airlines to fly with consideration of our neighbors in mind. The Airport makes every effort to promote flight procedures that minimize aircraft noise while always maintaining safety as the highest priority. It is the FAA’s sole responsibility to develop air traffic rules, assign the use of airspace, and control air traffic.

STS is working with our Aviation Commission and a community advisory group to re-write the Airport’s Noise Abatement Guide and associated procedures (to be released in the future). Using flight-tracking and noise management software, the Airport also provides monthly complaint reports to pilots and to airlines so that operators can use real data to update flight practices and fly friendly. As more data becomes available to STS staff, additional analysis is performed and included in monthly and annual reports.

STS Historical Operations



This Month's Operations



This Month's Noise Complaints At-A-Glance

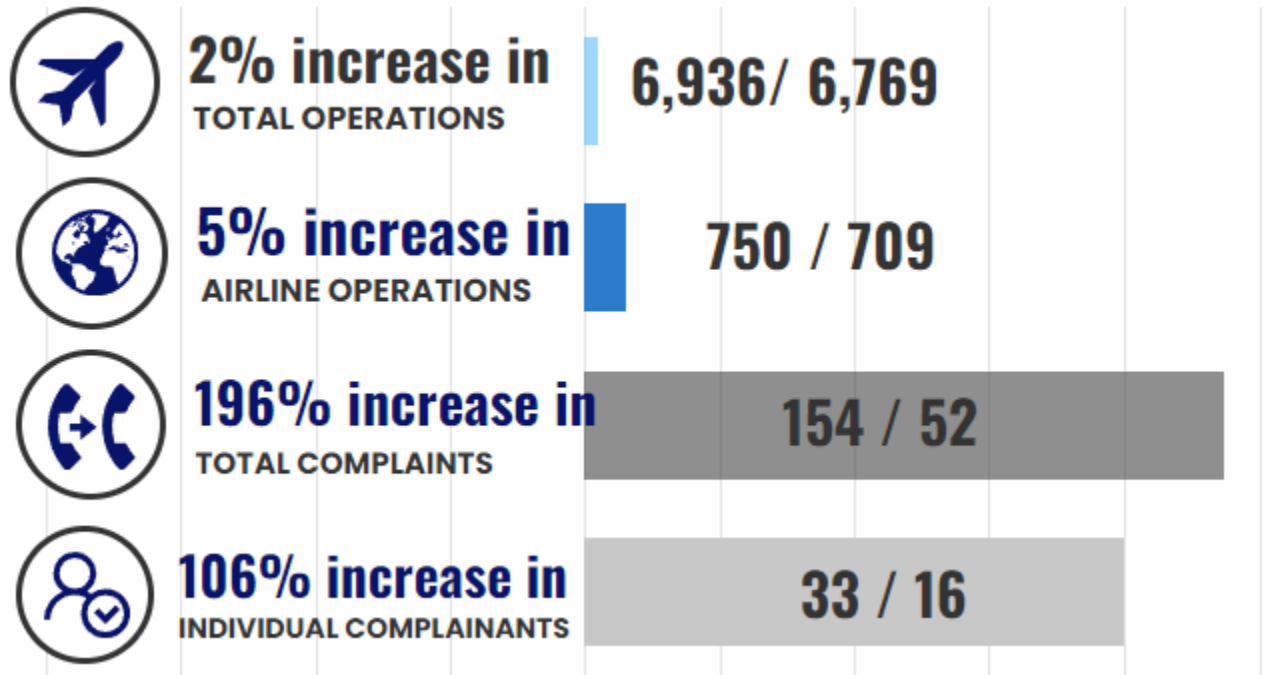
- 154 Noise Complaints received
- 39 Individual Commenters
- 7 New Commenters
- 110 Correlated Operations*
- 28 Complaints that were non-specific, were regarding operations that did not include STS as the origin or the destination (not Airport-related), or were unable to be correlated to a flight track/aircraft



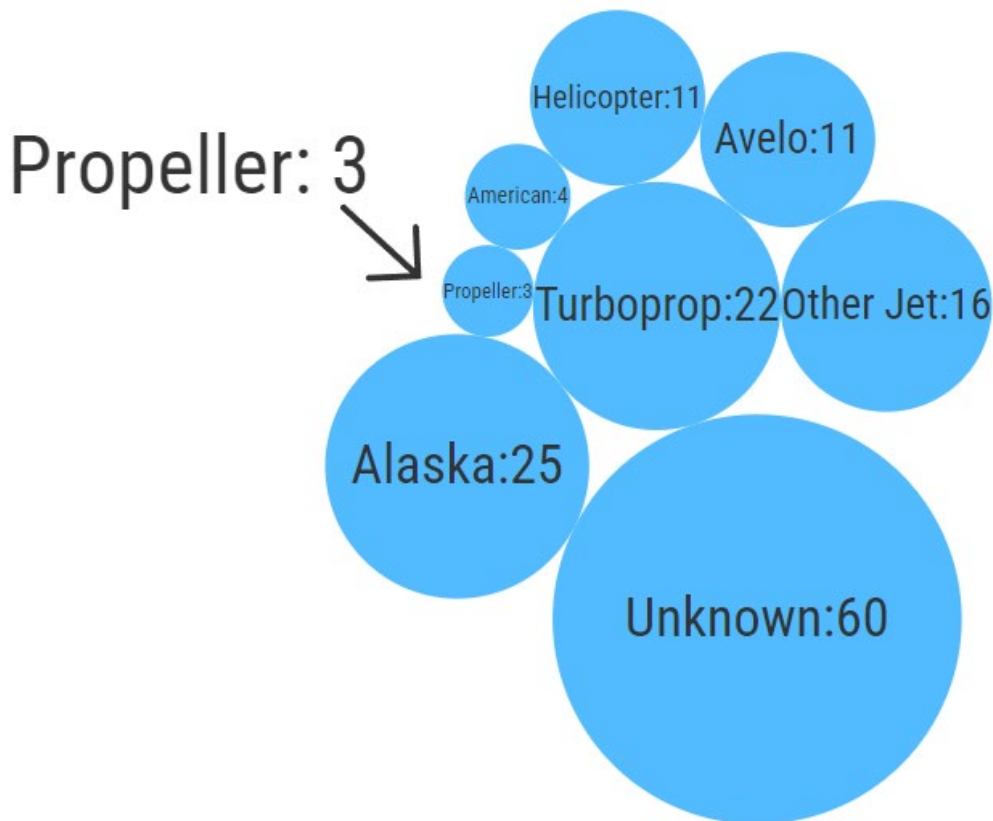
**An Operation is a departure from or an arrival to the Airport. Complaints may be correlated to more than one Operation or may not be correlated to an Operation.*

The Airport received 58 more complaints in November than in October. This month, 5 of the complaints received was from a commenter located greater than ten nautical miles from the Airport. There were 7 new commenters this month. 19 of the 39 individual commenters live within five nautical miles of STS, including the 1 of the new commenters. The new commenters live in Calistoga, Cotati, Santa Rosa, Sebastopol, and Petaluma. The majority of noise complaints received in November were regarding Alaska Airlines, other jets, and helicopters.

What's Changed This Year? November 2023 vs. 2022



Airlines and Operators Identified Through Complaints

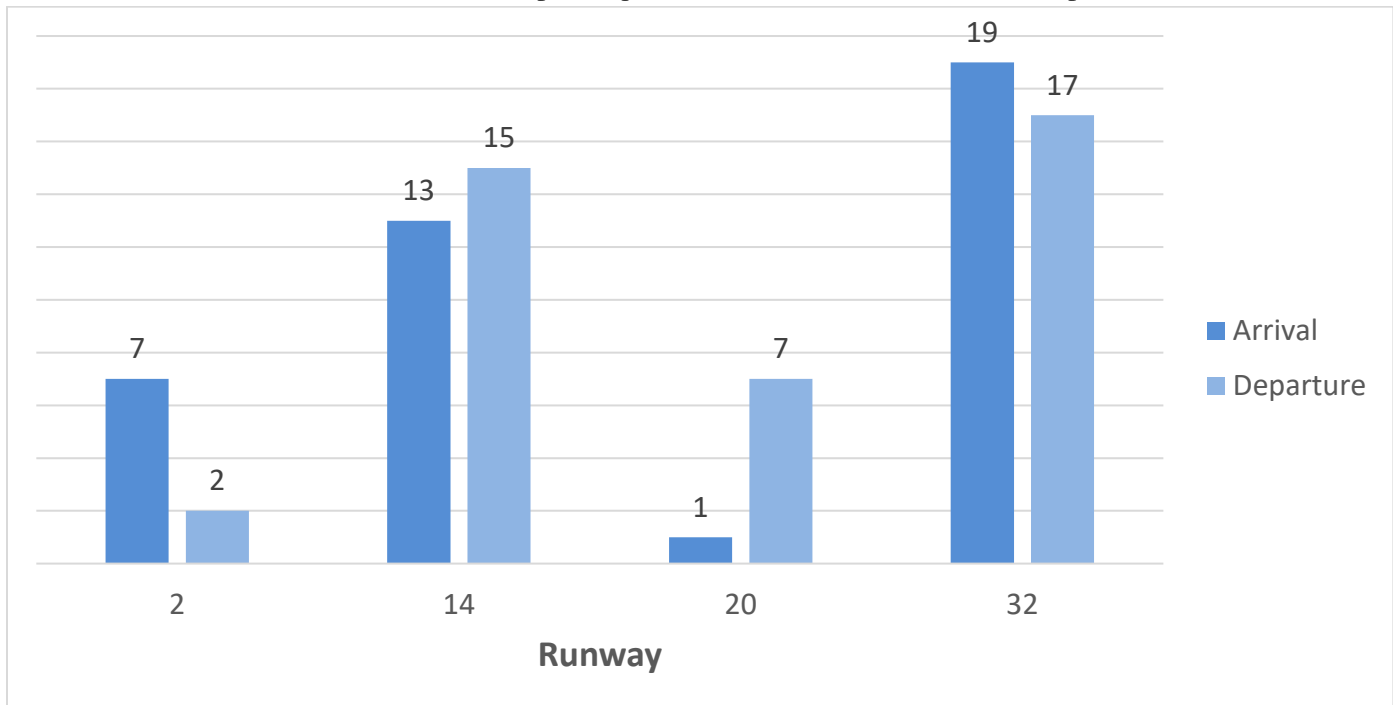


Aircraft Operated by Airlines at STS

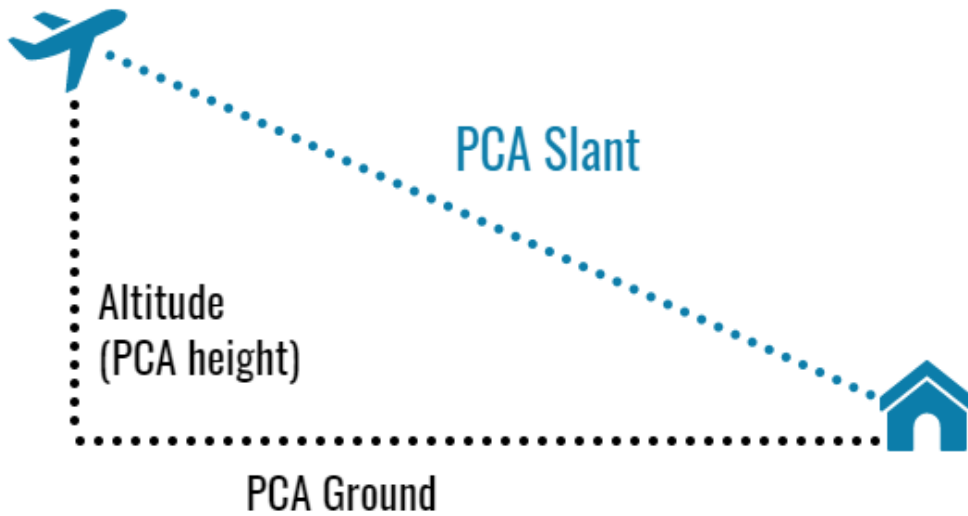
ALASKA AIRLINES	AMERICAN AIRLINES	AVELO AIRLINES
<u>E175 (76 seats)</u> 	<u>E175 (76 seats)</u> 	<u>737-800 (189 seats)</u> 
<u>737-800 (147 seats)</u> 	<u>CRJ700 (65-76 seats)</u> 	
	<u>CRJ900 (76-79 seats)</u> 	

All airlines operate jets.

Identified Aircraft by Operation, Runway



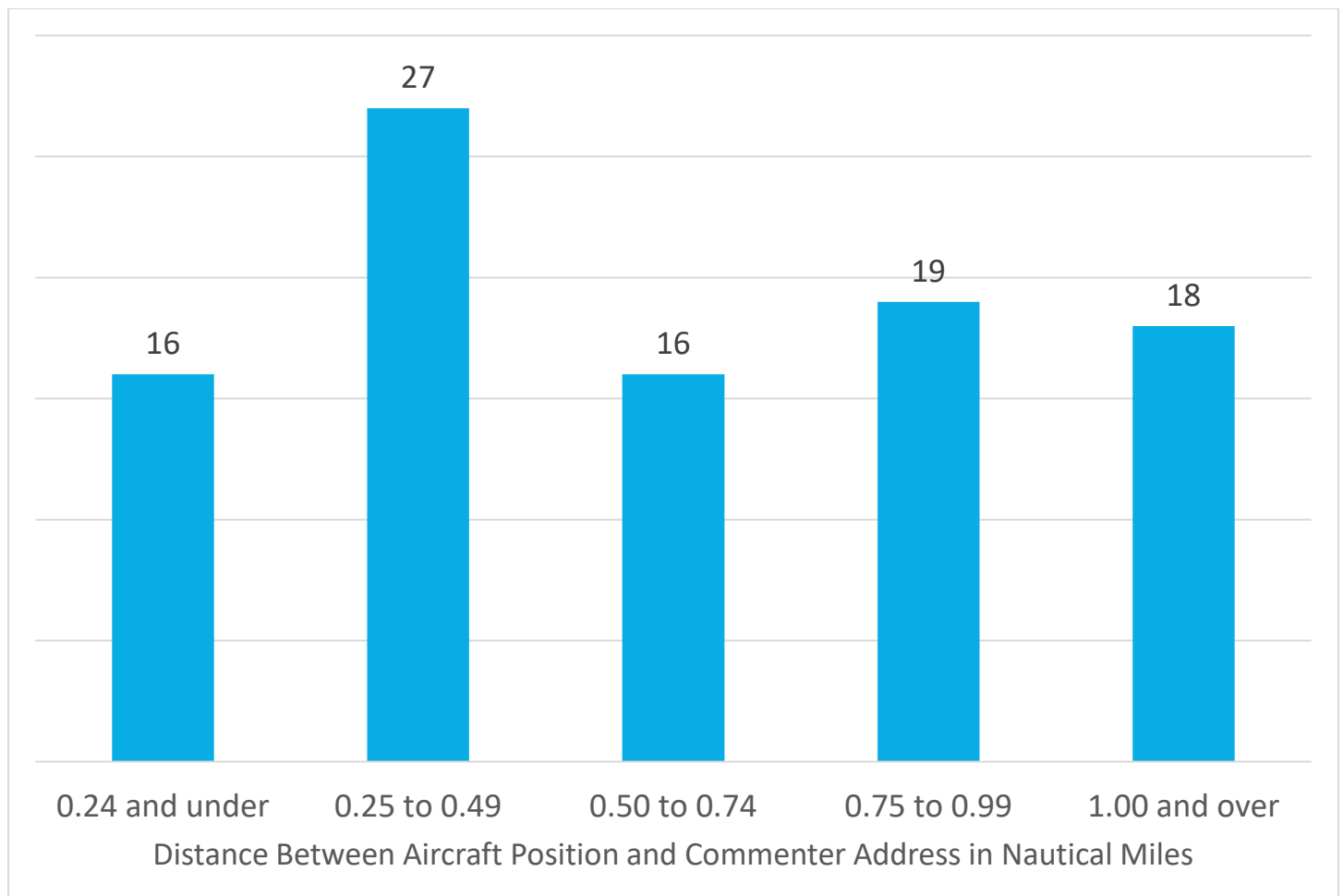
Aircraft Points of Closest Approach (PCA)



There were 96 aircraft identified through complaints made this month with a tracked point of closest approach (PCA). Sometimes called the PCA slant, the PCA is the distance in nautical miles between the commenter’s address and the aircraft.

In November, 17% of aircraft that generated complaints were less than a quarter-mile from the commenter’s address per the PCA measurement.

Most Aircraft Were Between 0.25 and 0.49 Nautical Miles from the Commenter



Aircraft Altitudes

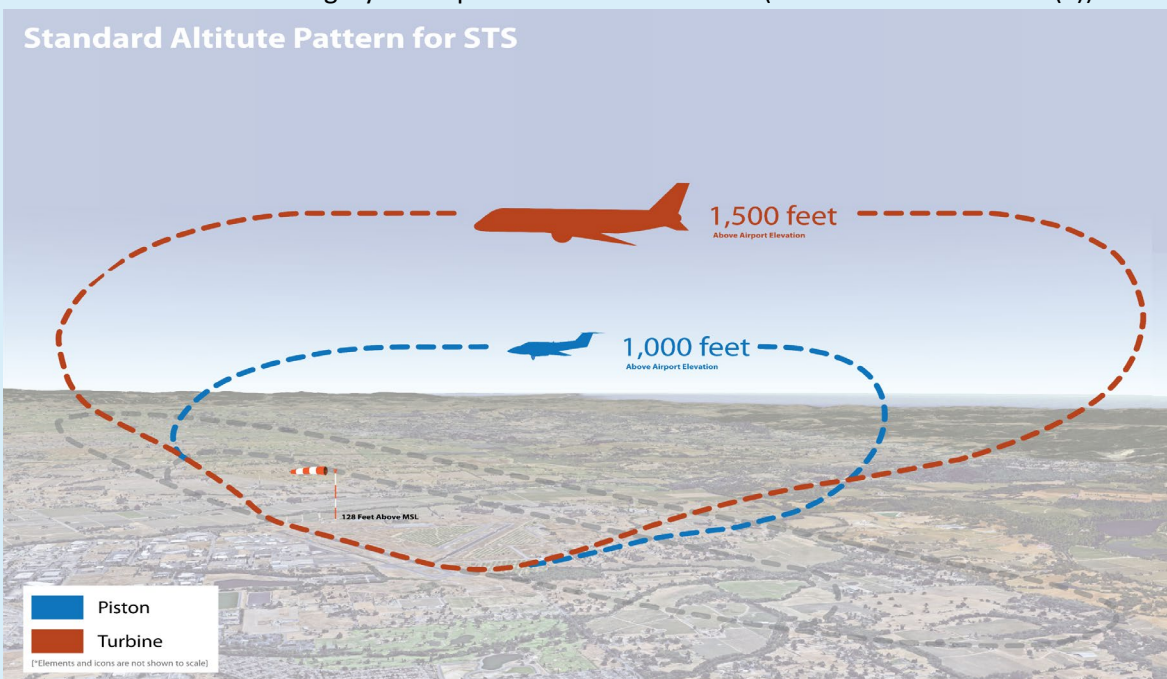
There were 95 aircraft identified through complaints made this month with a tracked altitude. At the point of closest approach to the commenter’s address, the altitude was recorded (in feet) in relation to the commenters location and may be represented as a negative number due to their location being at a higher elevation than the Airport and flight paths. Per FAA aircraft guidelines, except when necessary for takeoff or landing, aircraft must maintain an altitude of at least 1,000 feet over populated areas. Helicopters may operate safely at less than the minimum for other aircraft.

Recorded Altitude Range	Aircraft	Recorded Altitude
Under 1,000 feet	20*	74, 74, 124, 124, 124, 299, 362, 396, 424, 449, 649, 672, 706, 767, 865, 867, 921, 990, 990, 999
1,000 to 1,499 feet	10	1067, 1085, 1137, 1172, 1189
1,500 to 1,999 feet	11	1535, 1564, 159, 1598, 1622, 1699, 1722, 1792, 1823, 1823, 1837, 1847, 1869, 1912, 1912, 1942, 1987
Over 2,000 feet	15	2087, 2096, 2162, 2251, 2251, 2348, 2362, 2372, 2501, 2514, 2517, 2539, 2539, 2774, 2798, 2826, 2916, 2939, 2964, 3189, 3222, 3315, 3315, 3374, 3447, 3673, 3690, 3789, 3965, 4015, 4072, 4072, 4072, 4165, 4165, 4222, 4315, 4463, 4499, 4623, 4637, 4662, 4672, 4772, 4789, 4873, 4923, 4938, 4965, 4972, 4990, 4990, 4990

*Aircraft under 500 feet are typically helicopters.

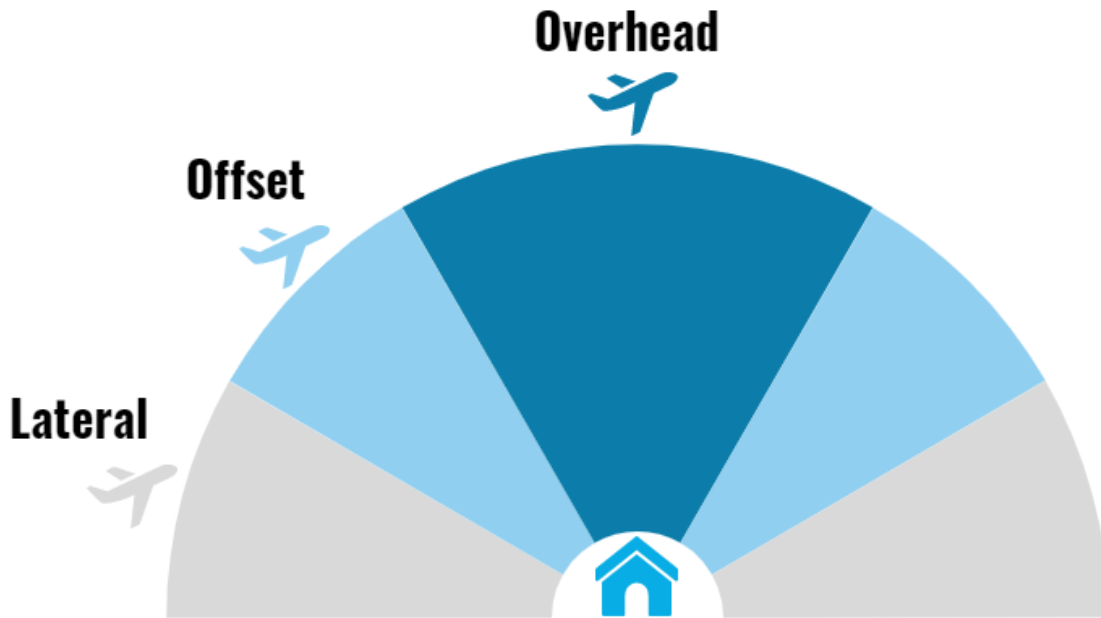
What are the altitude requirements for aircraft landing at or taking off from the Airport?

The Airport’s standard altitude pattern is the highest allowed by the FAA. Under FAA regulations, altitude restrictions are not applicable during landing and takeoff. The FAA has exclusive sovereignty of airspace in the United States (49 U.S.C. Section 40103(a)).



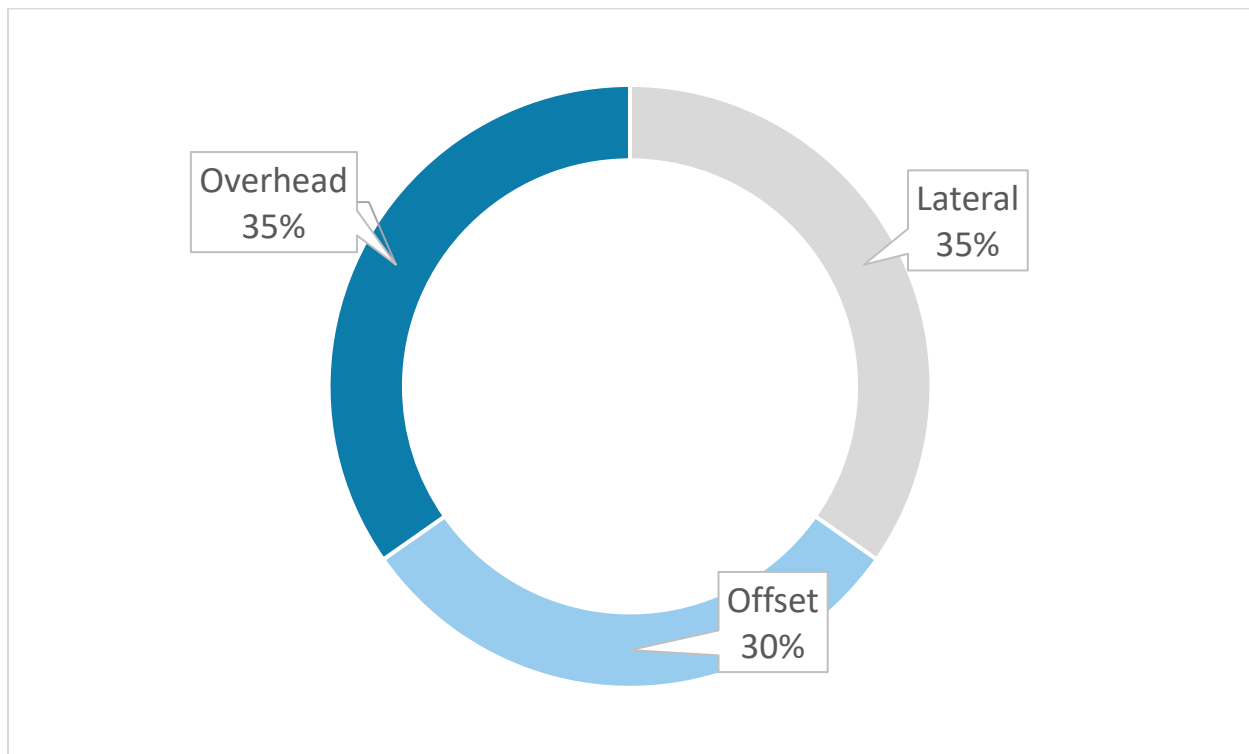
Aircraft Angles

At the point of closest approach to the commenter’s address, the angle was calculated. The angle of the aircraft was then categorized as lateral (0° to 30°), offset (30° to 60°), or overhead (60° to 90°).

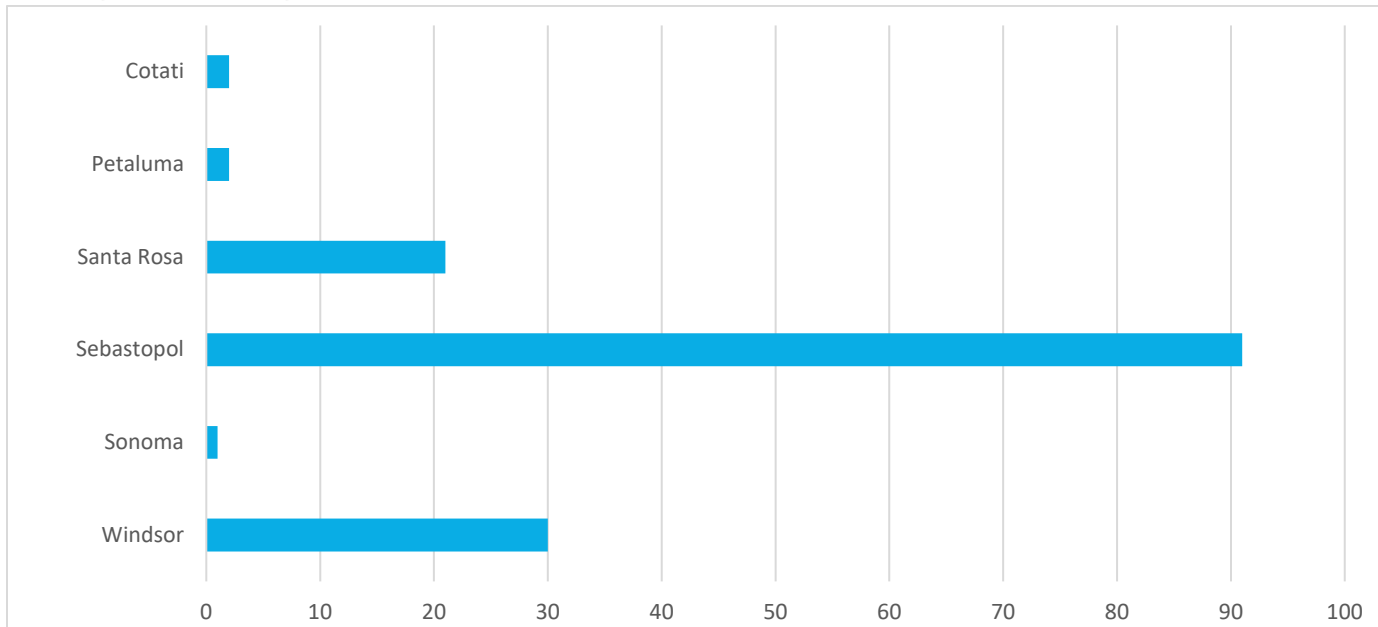


Lateral = 0° to 30° Offset = 30° to 60° Overhead = 60° to 90°

Most Aircraft Were Overhead or Lateral at the Time of Complaint



Originating Locations of Complaints

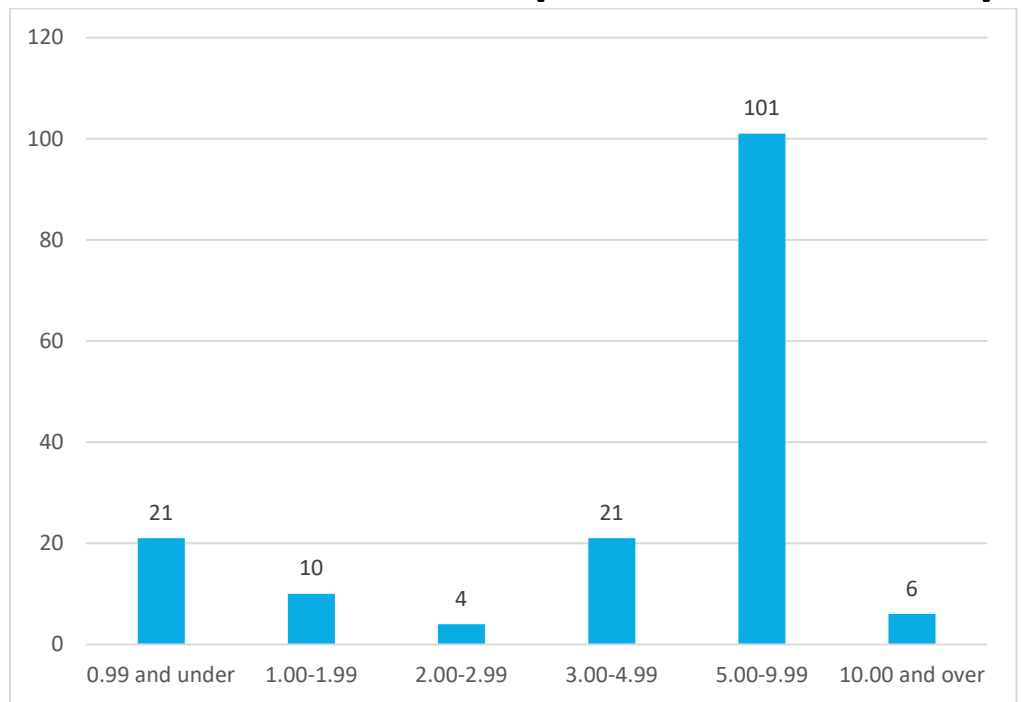


This graph reflects the locations of unique commenters this month.

Distance of Originating Complaint Locations from STS (in nautical miles)

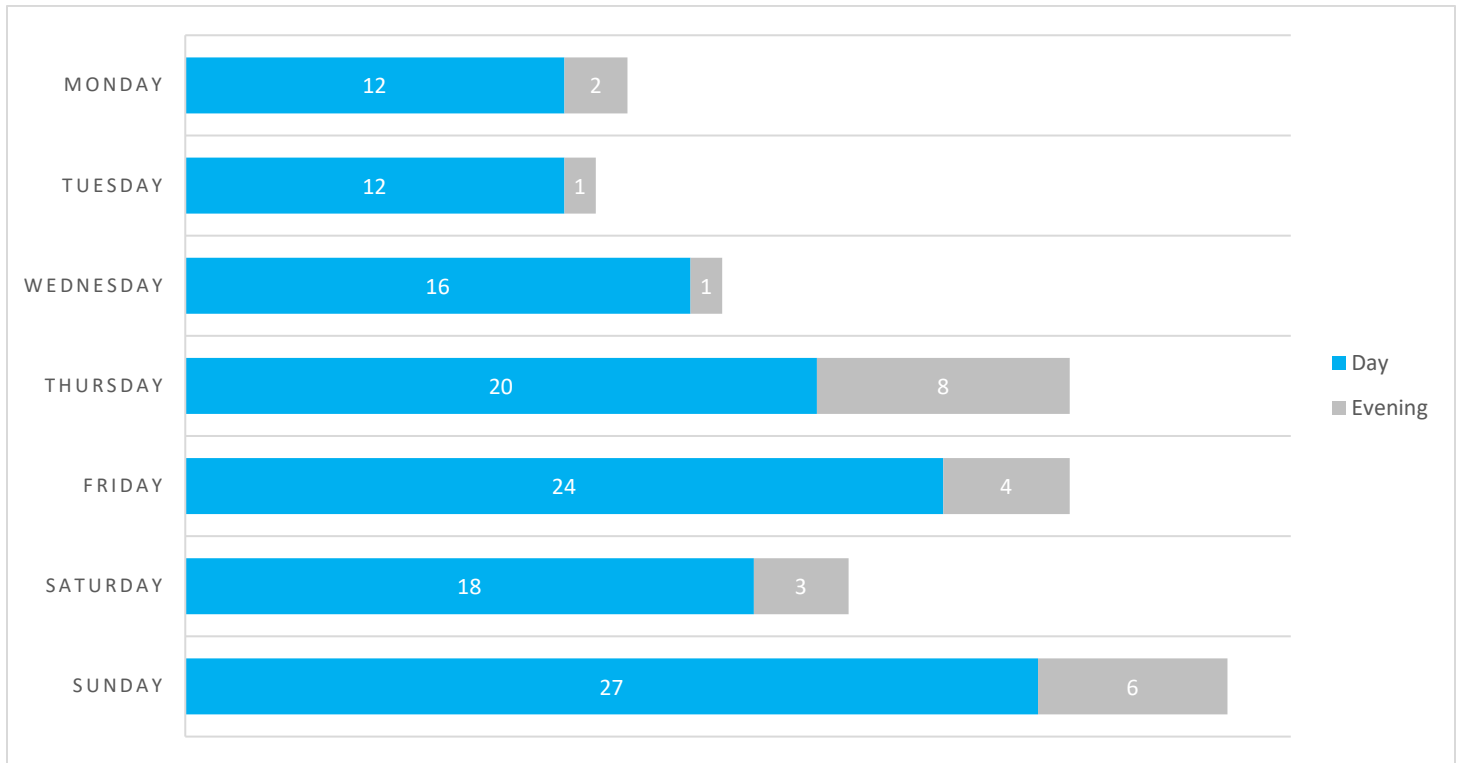
Why are aircraft flying over my house?

The FAA directs traffic into and out of the Airport. Flights are directed to the safest pattern depending on the amount of air traffic and prevailing winds at the time of arrival or departure. Safety is the FAA’s first consideration. However, aircraft can and do fly over all parts of Sonoma County. Sonoma County does not contain any No Fly Zones.



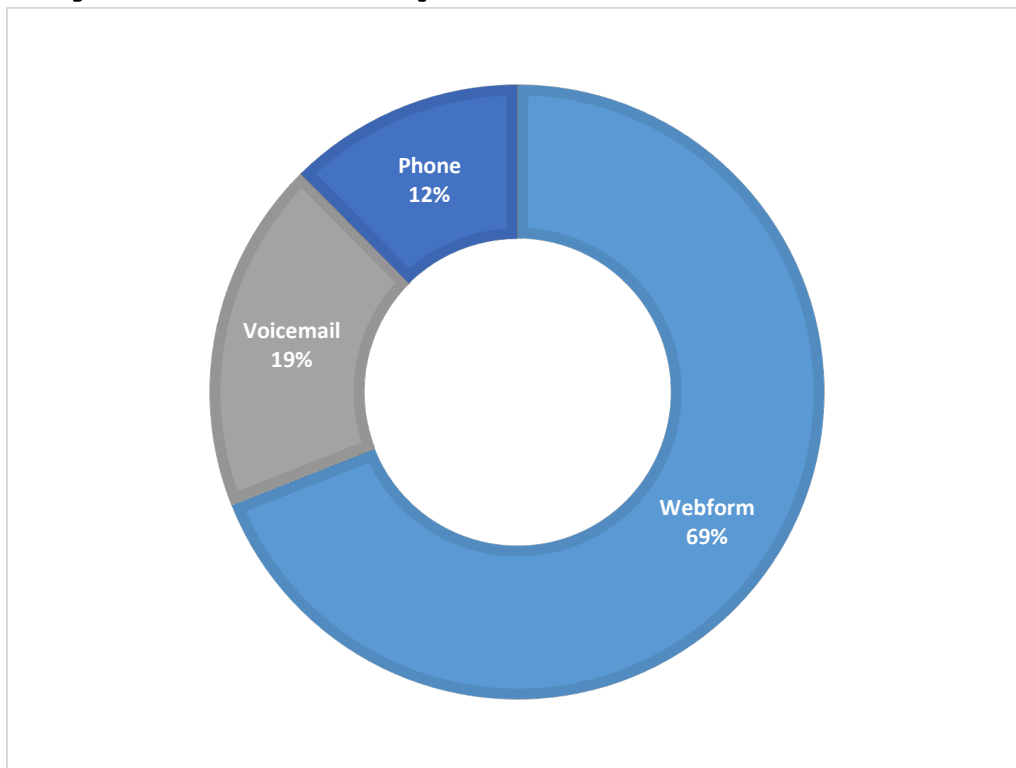
This graph reflects the distance between the Airport and the addresses of unique complainants who made complaints this month in nautical miles (NM).

Days and Times Complaints Were Generated

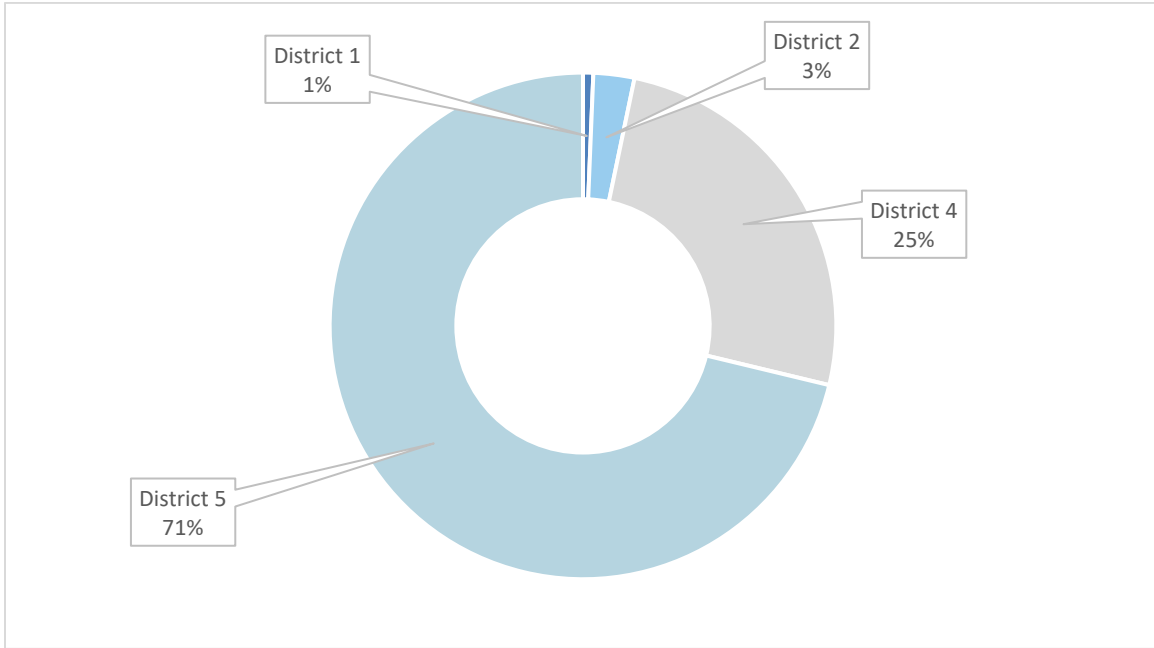


Day = 7:00 AM to 5:59 PM / **Evening** = 6:00 PM to 9:59 AM / **Night** = 10:00 PM – 6:59 AM

Method by Which Complaints Were Received



County Districts Complaints Were Received From*



*Supervisory districts are based on the district map located on the Sonoma County [website](#).

Year-to-Date Operations and Complaints

Month	2023 Total Operations	2023 Airline Operations	2023 Complaints	2022 Total Operations	2022 Airline Operations	2022 Complaints
January	5,637	561	32	7,809	687	54
February	5,637	573	51	7,410	588	30
March	5,683	622	67	8,090	723	31
April	7,088	716	97	7,439	783	54
May	7,419	743	68	8,738	804	63
June	7,518	719	85	8,603	884	91
July	8,233	684	94	8,002	954	109
August	8,528	750	114	8,147	888	148
September	7,187	896	128	7,243	981	96
October	7,565	833	96	7,320	866	115
November	6,936	750	154	6,769	709	52
December				5,172	582	43
YTD	77,431	7,847	986	85,570	8,867	843

Year-to-Date Activities Identified Through Complaints*

Month	District 1	District 2	District 3	District 4	District 5
January	-	-	1	2	29
February	-	4	1	3	43
March	3	-	2	6	56
April	-	3	1	9	84
May	-	-	-	3	63
June	1	-	-	5	79
July	1	2	-	5	86
August	1	1	2	14	96
September	-	-	-	13	115
October	1	1	4	17	73
November	1	4	-	39	109
December					
YTD	8	15	11	116	833

Month	Alaska Airlines	Avelo Airlines	American Airlines	Other Jet	Helicopter	Propeller	Turboprop	Military	Unknown
January	7	3	1	2	3	10	1	-	5
February	18	4	4	2	4	9	-	-	10
March	17	8	6	7	4	11	3	-	11
April	22	11	13	9	-	16	4	-	22
May	14	7	7	7	-	13	1	-	19
June	26	5	1	17	-	9	-	-	27
July	20	3	7	11	-	10	2	-	41
August	33	6	14	17	-	6	4	-	37
September	49	10	7	16	7	8	1	-	30
October	34	5	6	15	15	6	3	-	11
November	25	11	4	16	11	3	22	-	60
December									
YTD	265	73	70	119	44	101	41	0	273
Airline Operations YTD	5,277	1,594	976						

**Complaints may be correlated to more than one Operation (arrival or departure from the Airport) or may not be correlated to an Operation or aircraft.*

Contact the Charles M. Schulz – Sonoma County Airport

To learn more about Noise Abatement at the Airport or submit a noise complaint:

<https://stsgoodneighbor.com>

Complaint submission tips:

Provide as much information as possible, including date, time, and, if possible, a description of the aircraft. Include the reason for your complaint.

To submit a general comment:

Visit <https://sonomacountyairport.org/about-sts/contact/>