

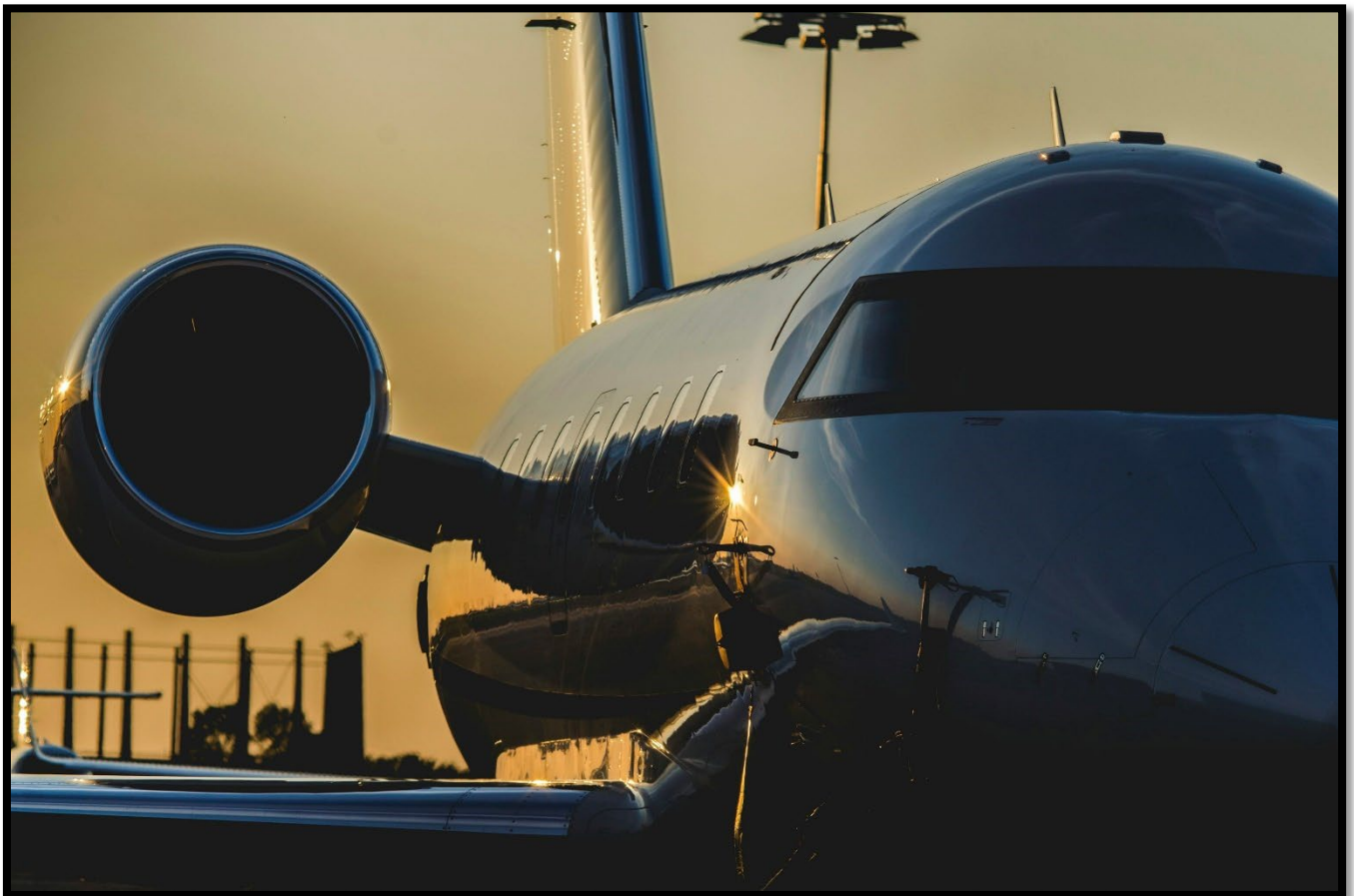


Charles M. Schulz – Sonoma County Airport
2290 Airport Boulevard
Santa Rosa, CA 95403
Ph: 707.565.7243
www.sonomacountyairport.org

Charles M. Schulz – Sonoma County Airport (STS)

Aircraft Noise Monthly Report

February 2025



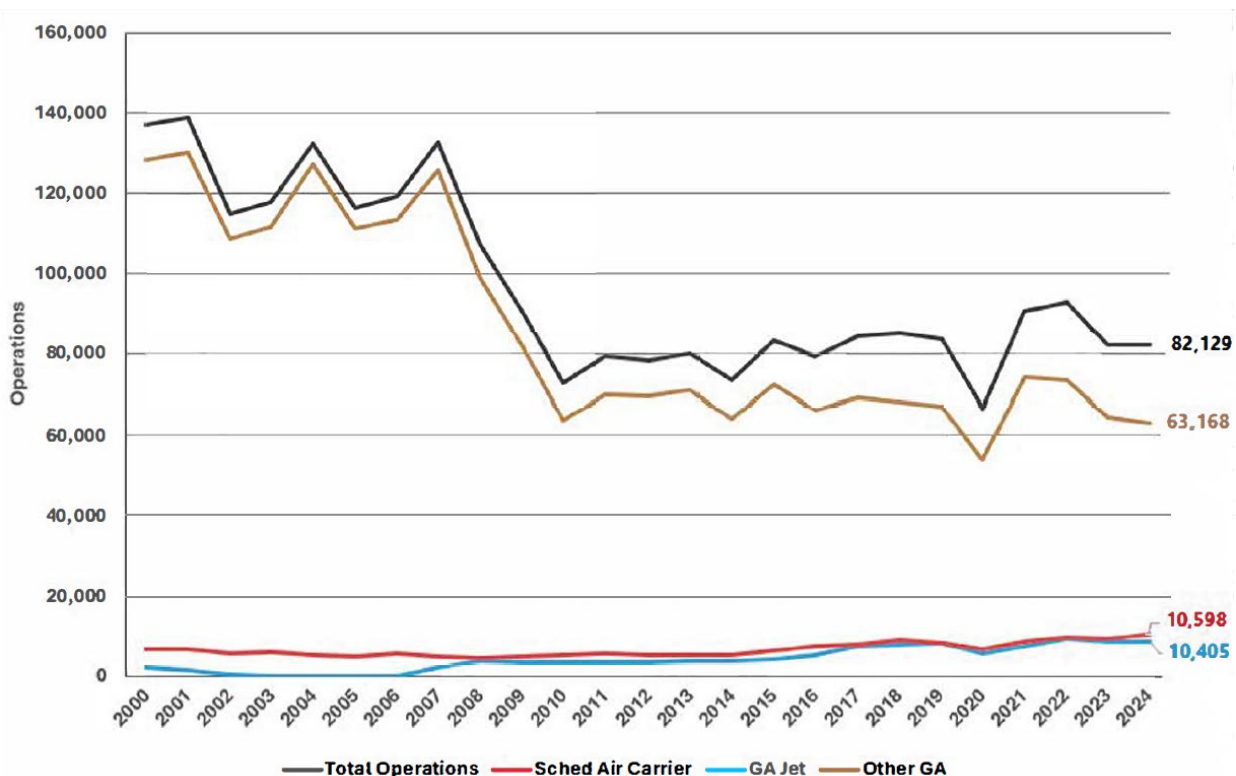
About the Charles M. Schulz – Sonoma County Airport and Noise Abatement

The Airport operates as a self-supporting Enterprise Fund within the Department of Transportation and Public Works and under the jurisdiction of the Federal Aviation Administration (FAA). STS is both a general aviation facility, serving private planes and business jets, and is a commercial airline facility with scheduled air service. STS generates over \$1,300,000 annually in tax revenues, via its users, for Sonoma County and County School Districts.

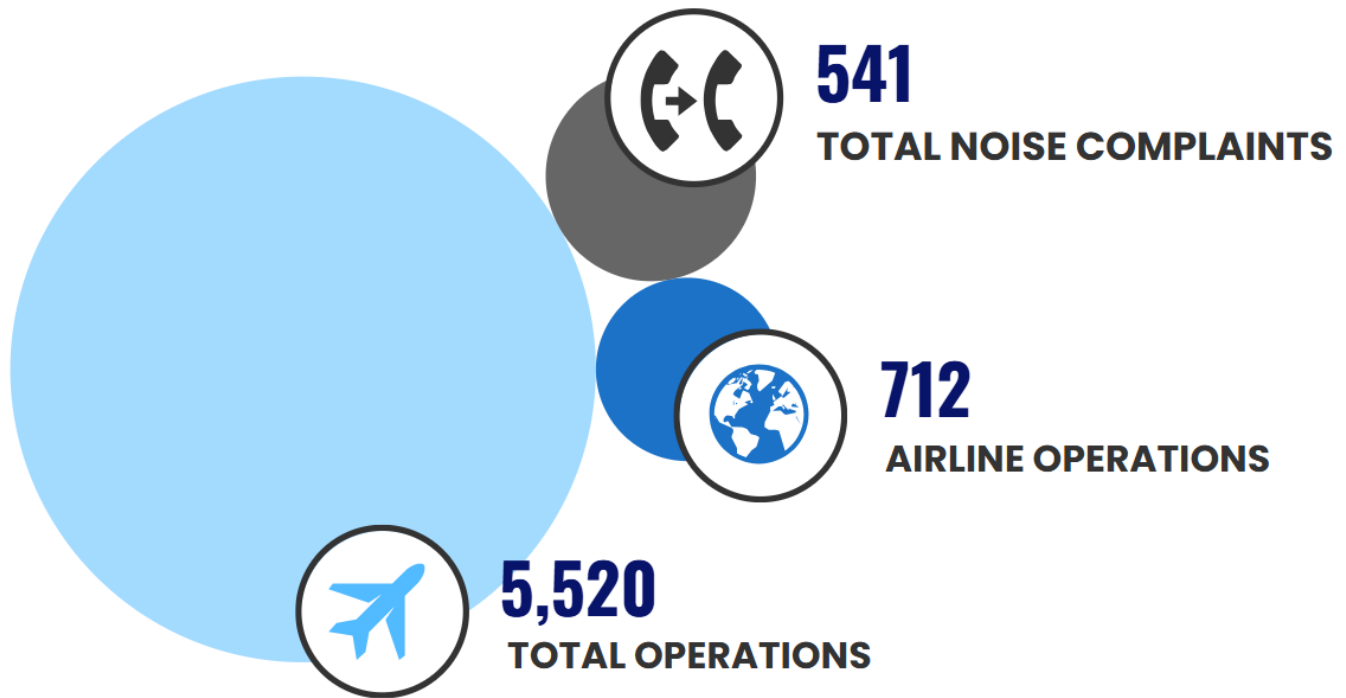
The Airport's current Noise Abatement Program was established in 1988. STS also works within FAA guidelines, to encourage pilots and airlines to fly with consideration of our neighbors in mind. The Airport makes every effort to promote flight procedures that minimize aircraft noise while always maintaining safety as the highest priority. It is the FAA's sole responsibility to develop air traffic rules, assign the use of airspace, and control air traffic.

STS is working with our Aviation Commission and a community advisory group to re-write the Airport's Noise Abatement Guide and associated procedures (to be released in the future). Using flight-tracking and noise management software, the Airport also provides monthly complaint reports to pilots and to airlines so that operators can use real data to update flight practices and fly friendly. As more data becomes available to STS staff, additional analysis is performed and included in monthly and annual reports.

STS Historical Operations



This Month's Operations



This Month's Noise Complaints At-A-Glance

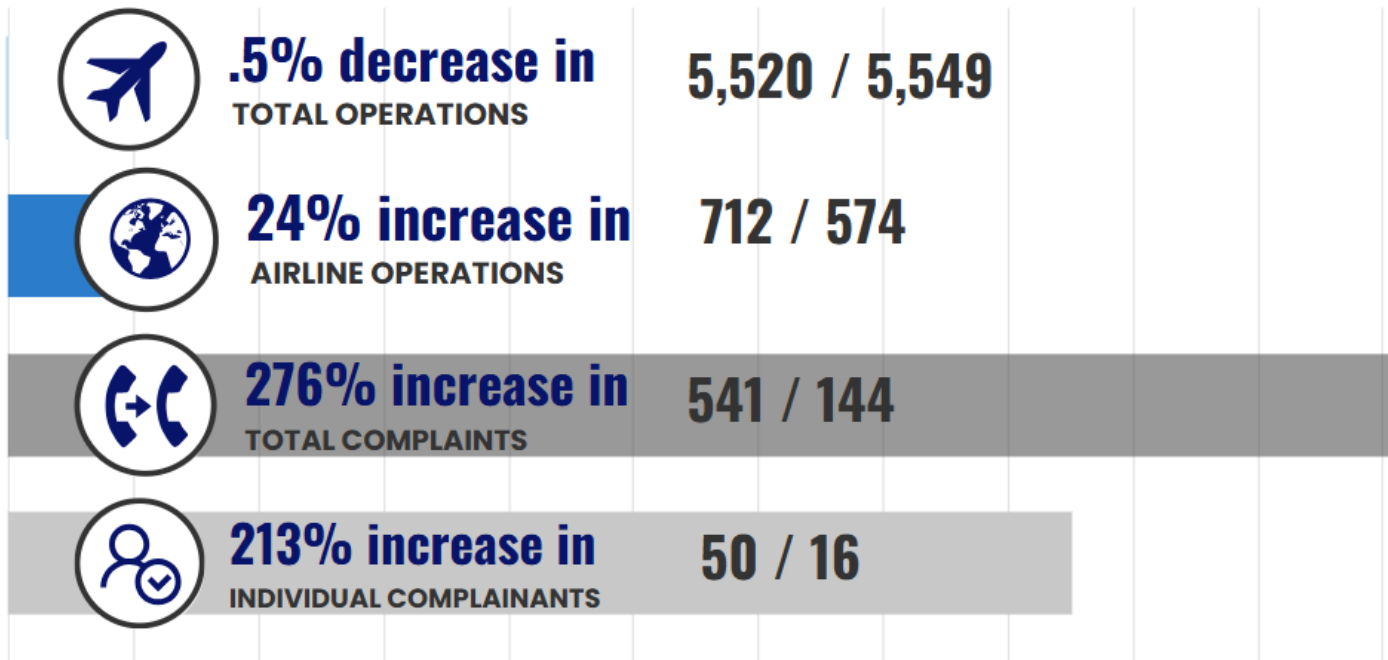
- 50 Individual Commenters
- 13 New Commenters
- 356 Correlated Operations*
- 185 Complaints that were non-specific, were regarding operations that did not include STS as the origin or the destination (not Airport-related), or were unable to be correlated to a flight track/aircraft

**An Operation is a departure from or an arrival to the Airport. Complaints may be correlated to more than one Operation or may not be correlated to an Operation.*

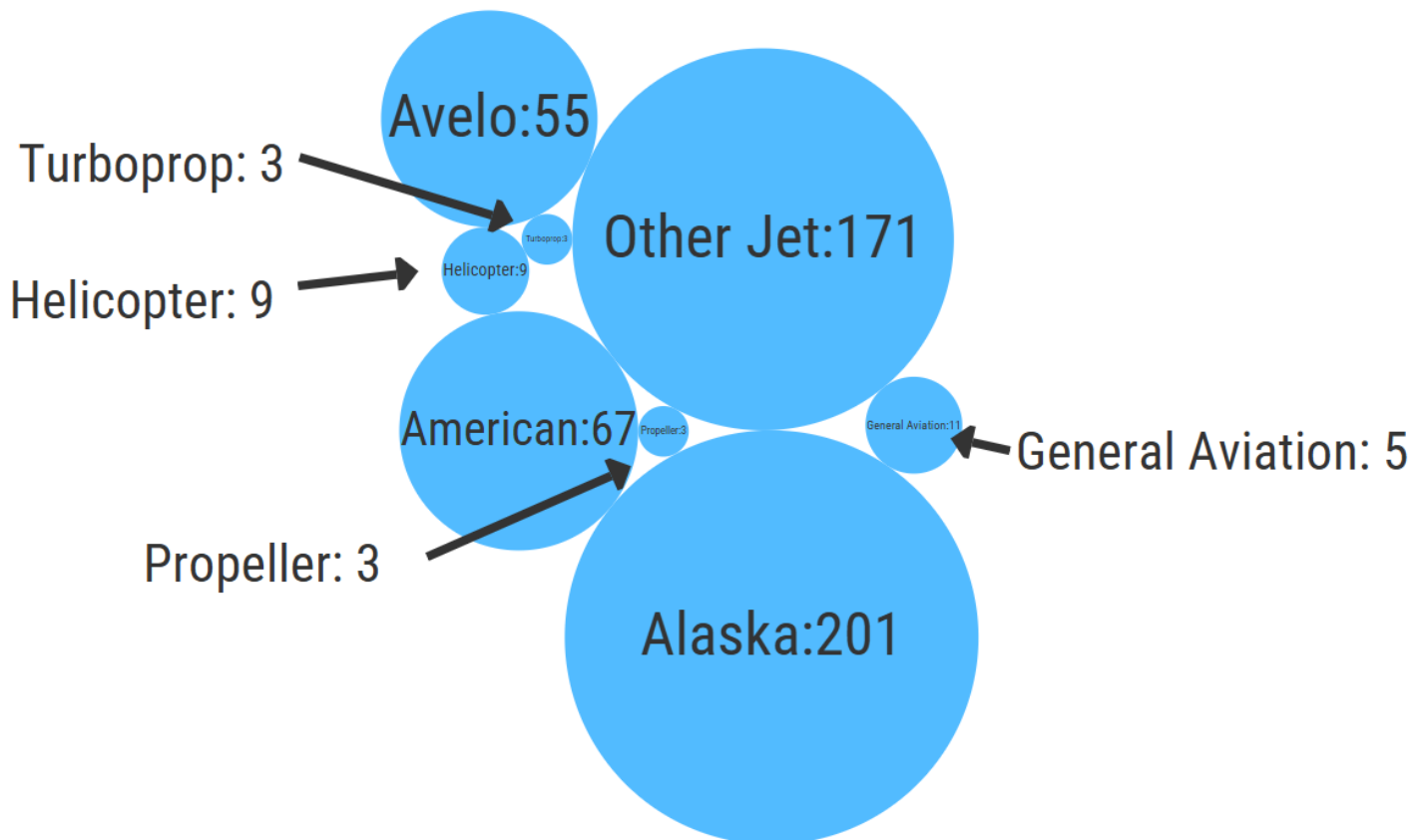
The Airport received 44 more complaints in February than in January. This month, 87 of the reports received were from a commenter located greater than ten nautical miles from the Airport. 20 of the 50 individual commenters live within five nautical miles of STS, including 6 of the new commenters. The new commenters live in Forestville, Occidental, Santa Rosa, and Sebastopol.



What's Changed This Year? February 2025 / 2024



Airlines and Operators Identified Through Complaints



All airlines operate jets.

ALASKA AIRLINES



E175 (76 seats)



737 (147-178 seats)

AMERICAN AIRLINES



E175 (76 seats)



CRJ700 (65-76 seats)



CRJ900 (76-79 seats)



Airbus 319 (128 seats)

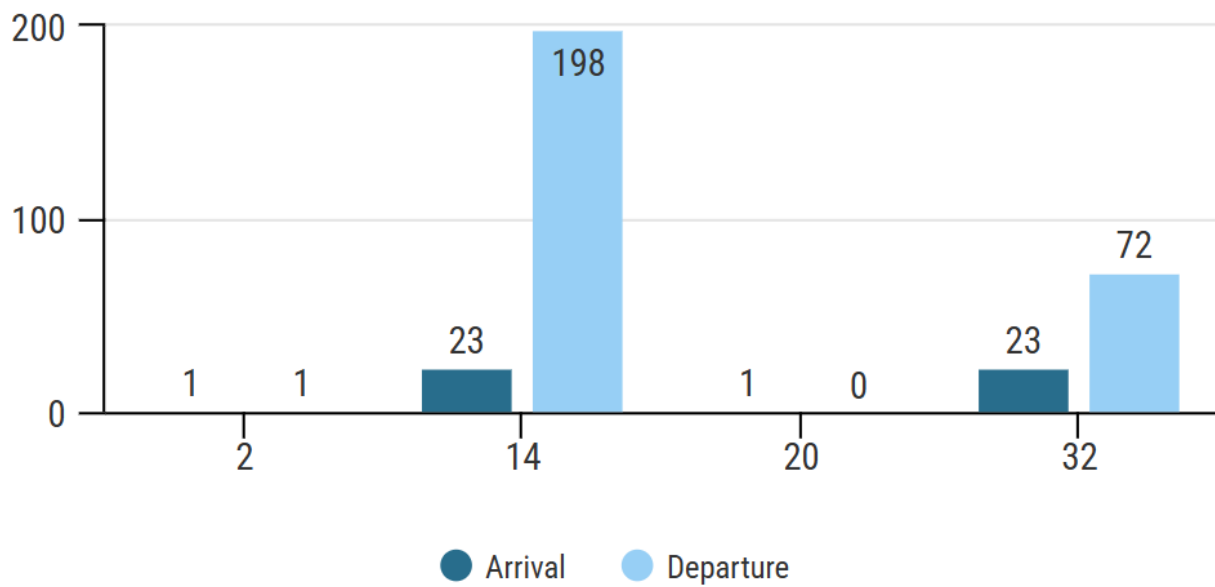
AVELO AIRLINES



737 (147-189 seats)

Aircraft Operated by Airlines at STS

Identified Aircraft by Operation and Runway



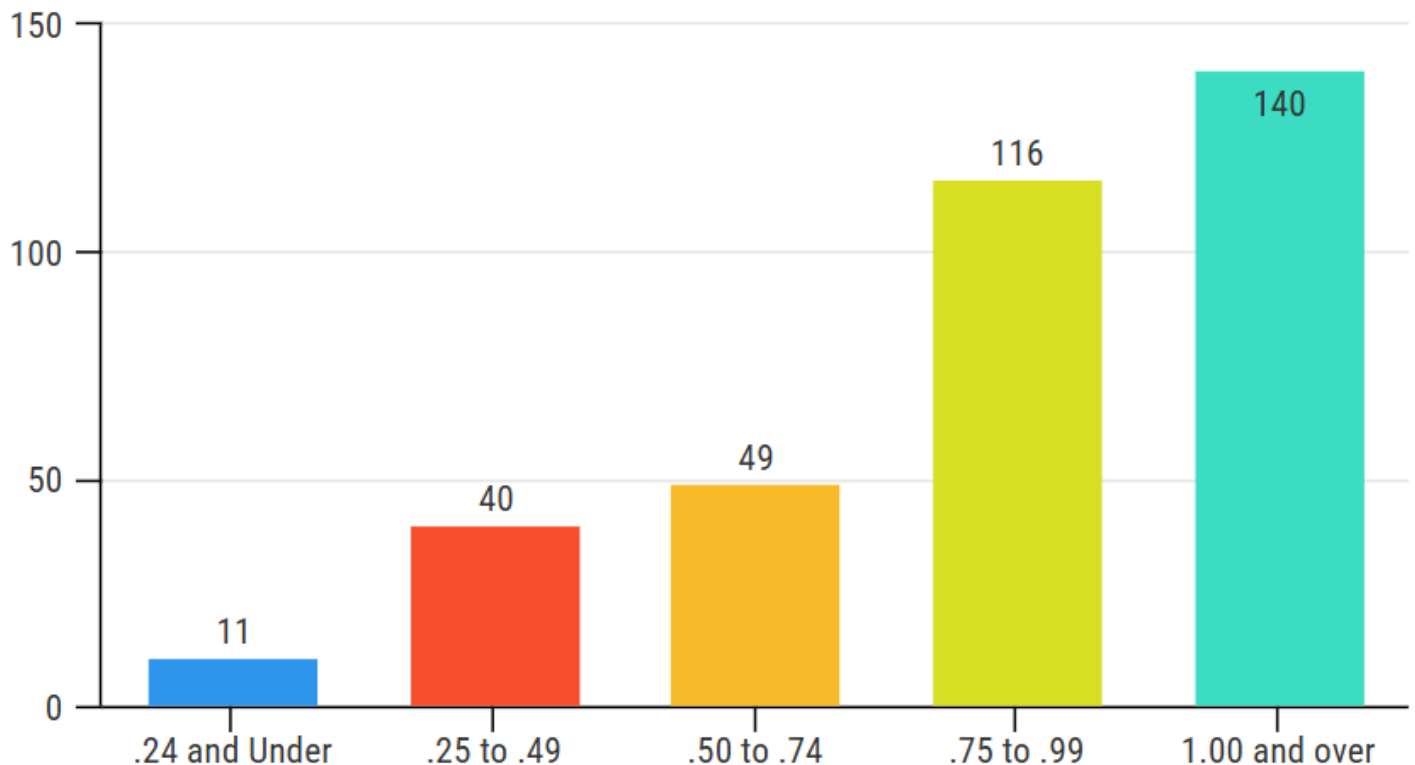
Aircraft Points of Closest Approach (PCA)



There were 356 aircraft identified through complaints made this month with a tracked point of closest approach (PCA). Sometimes called the PCA slant, the PCA is the distance in nautical miles between the commenter's address and the aircraft.

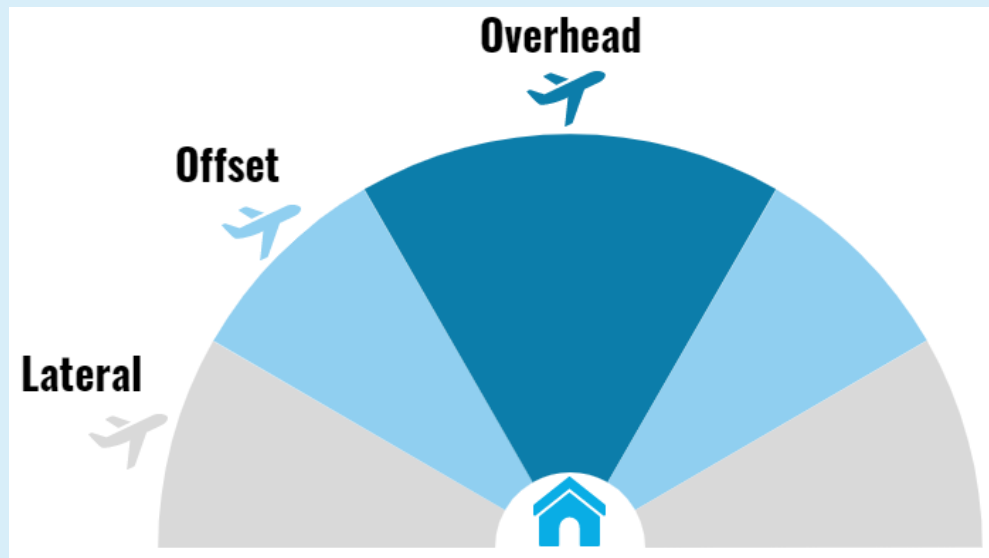
2% of aircraft that generated complaints were less than a quarter-mile from the commenter's address per the PCA measurement.

Distance Between Aircraft and Commenter Address in Nautical Miles This Month



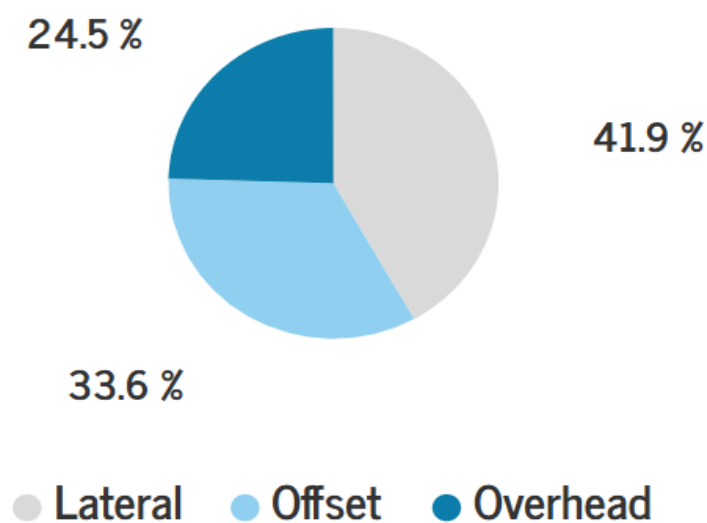
Aircraft Angles

At the point of closest approach to the commenter's address, the angle was calculated. The angle of the aircraft was then categorized as lateral (0° to 30°), offset (30° to 60°), or overhead (60° to 90°)

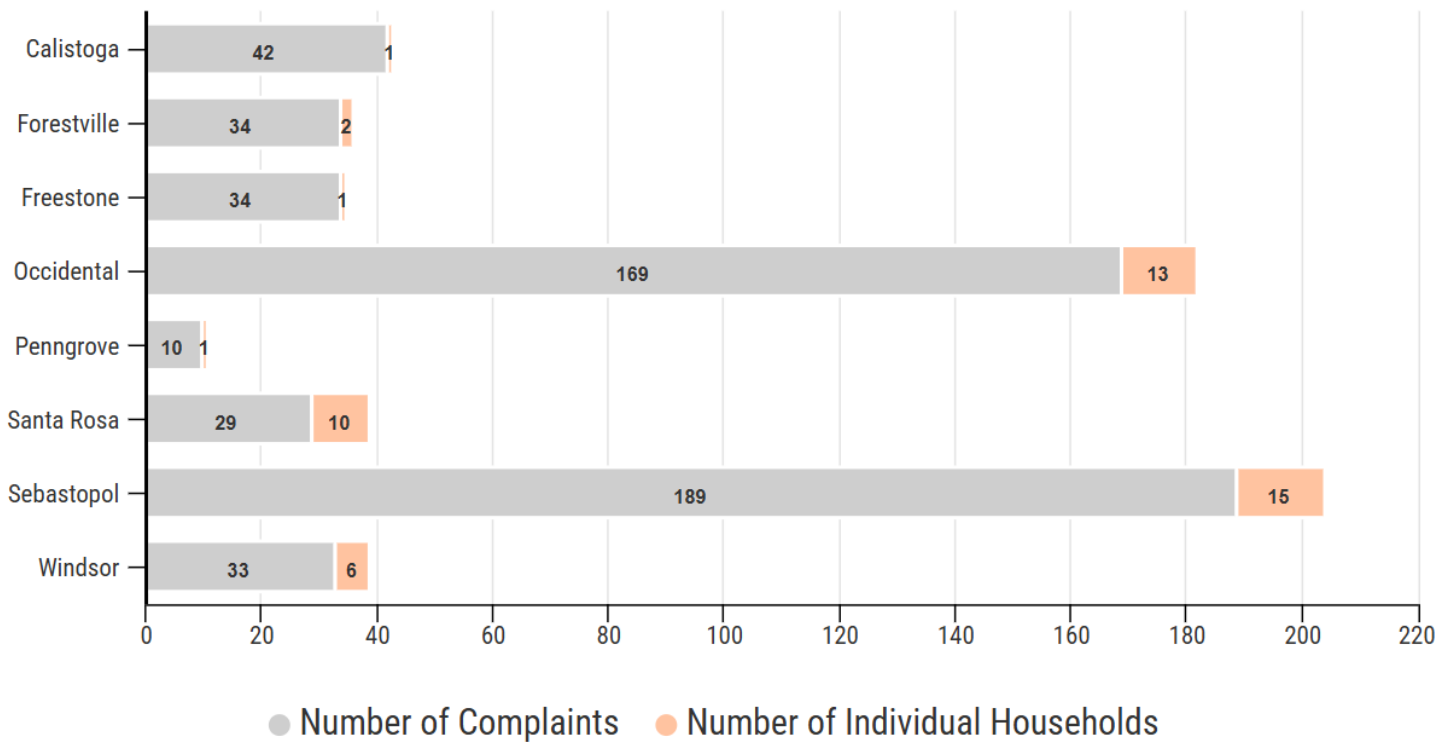


Lateral = 0° to 30° Offset = 30° to 60° Overhead = 60° to 90°

Flight Angles for the Current Month



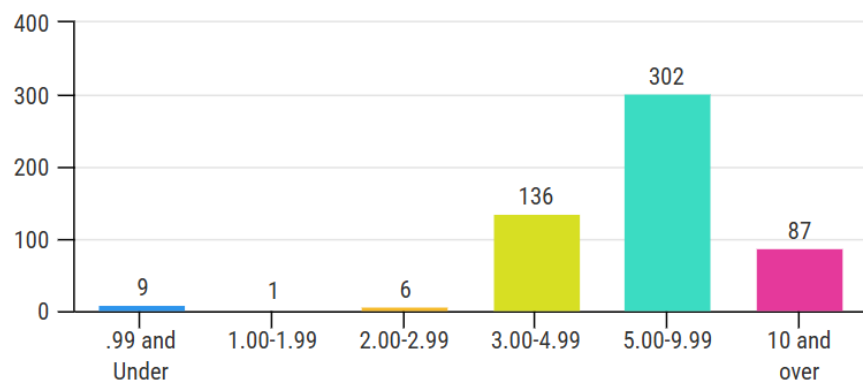
Originating Locations of Complaints



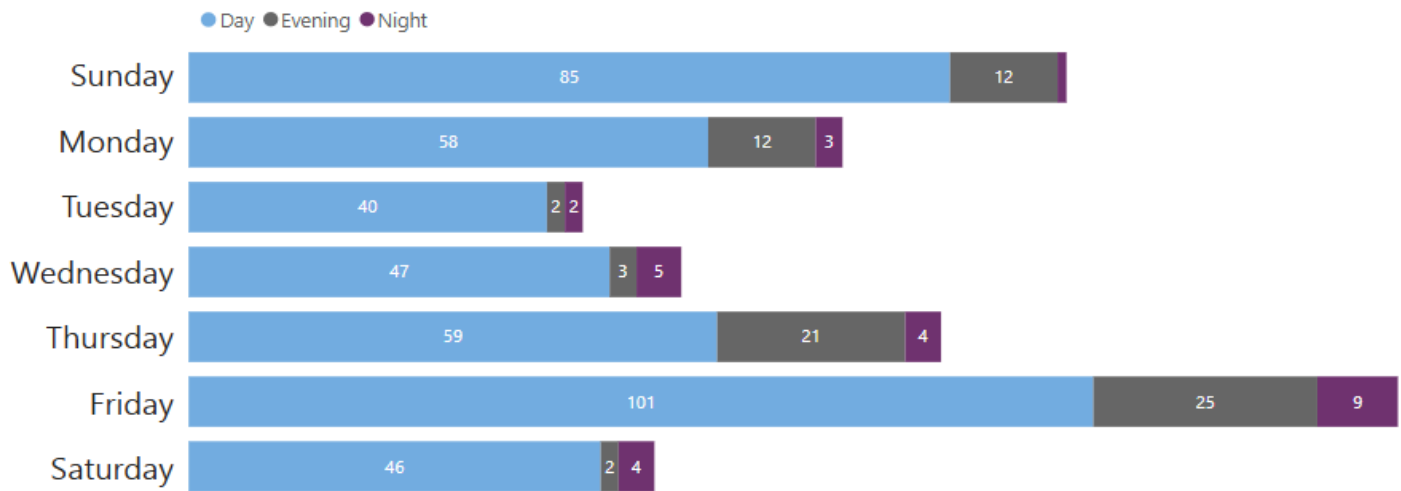
Why are aircraft flying over my house?

The FAA directs traffic into and out of the Airport. Flights are directed to the safest pattern depending on the amount of air traffic and prevailing winds at the time of arrival or departure. Safety is the FAA's first consideration. However, aircraft can and do fly over all parts of Sonoma County. Sonoma County does not contain any No Fly Zones.

Distance of Originating Complaint Locations From STS (in Nautical Miles)

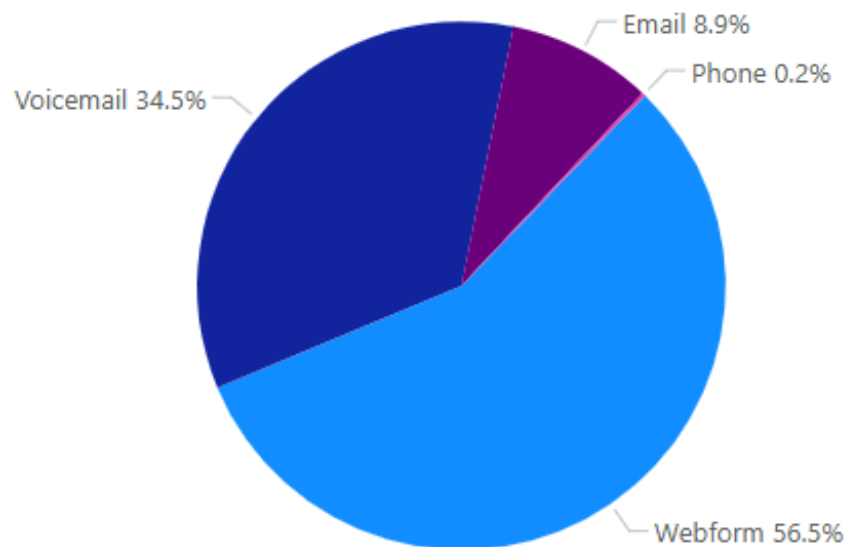


Complaint Days and Times

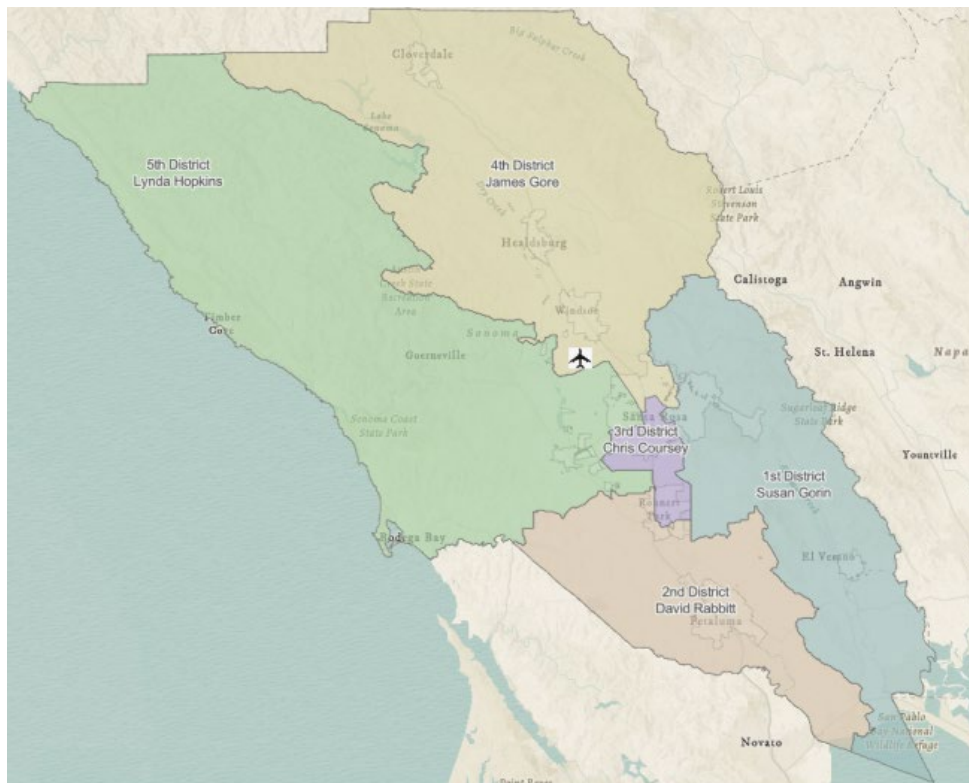
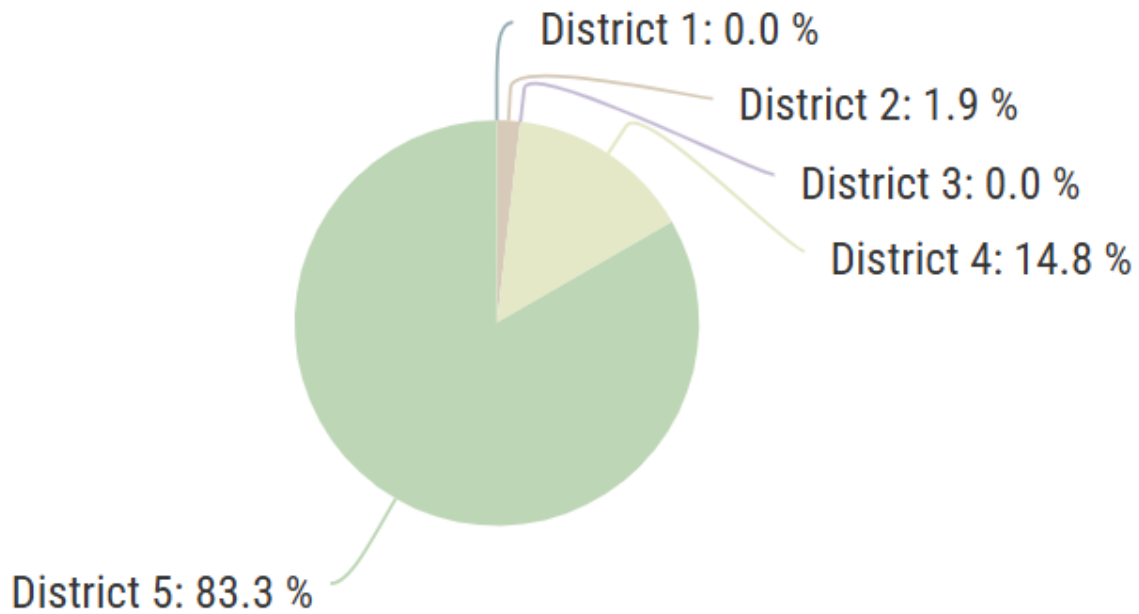


Day = 7:00 AM to 5:59 PM / **Evening** = 6:00 PM to 9:59 PM / **Night** = 10:00 PM – 6:59 AM

Method by Which Complaints Were Received



Complaints by District*



*Supervisory districts are based on the district map located on the Sonoma County [website](#).

Year-to-Date Operations and Complaints

Month	2025 Total Operations	2025 Airline Operations	2025 Complaints	2024 Total Operations	2024 Airline Operations	2024 Complaints
January	6,285	821	497	5,406	589	185
February	5,520	712	541	5,549	574	145
March				5,888	703	203
April				6,983	789	388
May				7,730	929	409
June				7,443	924	326
July				7,972	947	316
August				7,666	961	366
September				7,712	898	497
October				7,810	1,092	699
November				6,470	1,130	550
December				5,534	1,062	581
Year To Date	11,805	1,533	1,038	82,163	10,598	4,665
Total for Year-to-Date Previous Year:				10,955	1,163	330

Year-to-Date Complaints by District

Month	District 1	District 2	District 3	District 4	District 5
January	0	11	0	58	418
February	0	10	0	80	450
March					
April					
May					
June					
July					
August					
September					
October					
November					
December					
YTD	0	21	0	138	868

Year-to-Date Complaints by Aircraft

Complaints per Month	Alaska	Avelo	American	Total Airline Complaints	Other Jet	Helicopter	Propeller	Turboprop	General Aviation	Military	Unknown
January	233	56	32	321	146	8	3	3	5	0	11
February	201	55	67	323	171	9	3	3	11	0	21
March				0							
April				0							
May				0							
June				0							
July				0							
August				0							
September				0							
October				0							
November				0							
December				0							
Complaints YTD	434	111	99	644	317	17	6	6	16	0	32
Airline Operations YTD	1,103	276	154	1,533							
Airline Operations Per Complaint	3	2	2	2							

**Complaints may be correlated to more than one Operation (arrival or departure from the Airport) or may not be correlated to an Operation or aircraft.*

Contact the Charles M. Schulz – Sonoma County Airport

To learn more about Noise Abatement at the Airport or submit a noise complaint:

<https://stsgoodneighbor.com>

Complaint submission tips:

Provide as much information as possible, including date, time, and, if possible, a description of the aircraft. Include the reason for your complaint.

To submit a general comment:

Visit <https://sonomacountyairport.org/about-sts/contact/>